

Ball valve AT 3533-



Product information

Stainless steel/PTFE ball valve with full bore, internal threads, and mounting flange for actuator. Suitable for automation. Primarily for acids and salt solutions, gas, steam, hot and cold water.



Dimension range (DN)	10 - 50
PN	63
Temperature (°C)	-29 - 180
Main material	Stainless steel

Area of use

Used for shutting off most liquids and gases that occur in the process industry.

Tender text

PSB.1 Ball valves

Stainless steel ball valve AT 3533... with full bore, internal thread, and stainless steel lever.

Quality assurance

AFS 2023:5, AFS 2023:5, 8 paragraf, PED 2014/68/EU

Product marking: Brand, DN, PN, material code.

Energy and environment declaration

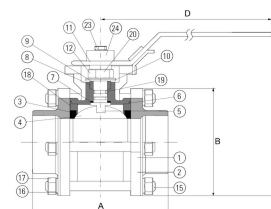
Product Bvb: Avoided

Product BVB ID: 109938

SundaHus: C-

Reach date: 6/27/2024 10:32:00 AM

Pos Component Material



Measurements and weight

Dimension range (DN): 10 - 50

DN	A	B	C	Net weight (kg)
10	75	0	70.9	0.6
15	75	0	70.9	0.6
20	80	0	73.4	0.8
25	90	0	84.1	1.5
32	110	0	89.3	1.9
40	120	0	109.5	3
50	140	0	118.9	4.5

Function and design

Quality valve, cast in stainless steel with fire-safe design and lockable handle. Three-piece ball valve. Blow-out proof antistatic spindle construction prevents the spindle from being pushed out during pressure surges. Mounting flange according to ISO 5211 for actuators. No valve disassembly required for service and installation of actuators. Valves larger than DN50 have a round valve body/mounting flange.

Technical data

Main material: Stainless steel

Main material code: Acid resistant stainless steel AISI 316 (1.4408, CF8M)

Included materials: Stainless steel, Other

Included material code: Acid resistant stainless steel AISI 316 (1.4408, CF8M) , PTFE (polytetrafluoroethylene)

Temperature (°C): -29 - 180

PN: 63

Connection: Internal thread ISO 228-1 (G, BSPP)

ETIM classification: EC011343 - Ball valve

BK04 code: 20702 Ball valves

3533-, Technical data

Item number	KVS	Execution	Connection 1	Connection 1 - spec.	Connection 2	Connection 2 - spec.	Connection according to ISO 5211	Stem measurments
3533S10		Full bore	Internal thread ISO 228-1 (G, BSPP)	3/8	Internal thread ISO 228-1 (G, BSPP)	3/8	F03/F04	9x9mm
3533S15	36	Full bore	Internal thread ISO 228-1 (G, BSPP)	1/2	Internal thread ISO 228-1 (G, BSPP)	1/2	F03/F04	9x9mm
3533S20	59	Full bore	Internal thread ISO 228-1 (G, BSPP)	3/4	Internal thread ISO 228-1 (G, BSPP)	3/4	F03/F04	9x9mm
3533S25	90	Full bore	Internal thread ISO 228-1 (G, BSPP)	1	Internal thread ISO 228-1 (G, BSPP)	1	F04/F05	11x11mm
3533S32	159	Full bore	Internal thread ISO 228-1 (G, BSPP)	1 1/4	Internal thread ISO 228-1 (G, BSPP)	1 1/4	F04/F05	11x11mm
3533S40	230	Full bore	Internal thread ISO 228-1 (G, BSPP)	1 1/2	Internal thread ISO 228-1 (G, BSPP)	1 1/2	F05/F07	14x14mm
3533S50	418	Full bore	Internal thread ISO 228-1 (G, BSPP)	2	Internal thread ISO 228-1 (G, BSPP)	2	F05/F07	14x14mm

Installation and maintenance

Flowdirection: Bi-directional

Possible mounting position: Vertical, Horizontal

For information on assembly and maintenance, please refer to the current user manual. The valve should be operated regularly to avoid the accumulation of dirt that can lead to leakage.

The company's management system
is certified by DNV
ISO 9001 • ISO 14001

Get into the flow

Get into the flow with Armatec.



armatec

info@armatec.se | +46 31 89 01 00 | www.armatec.se