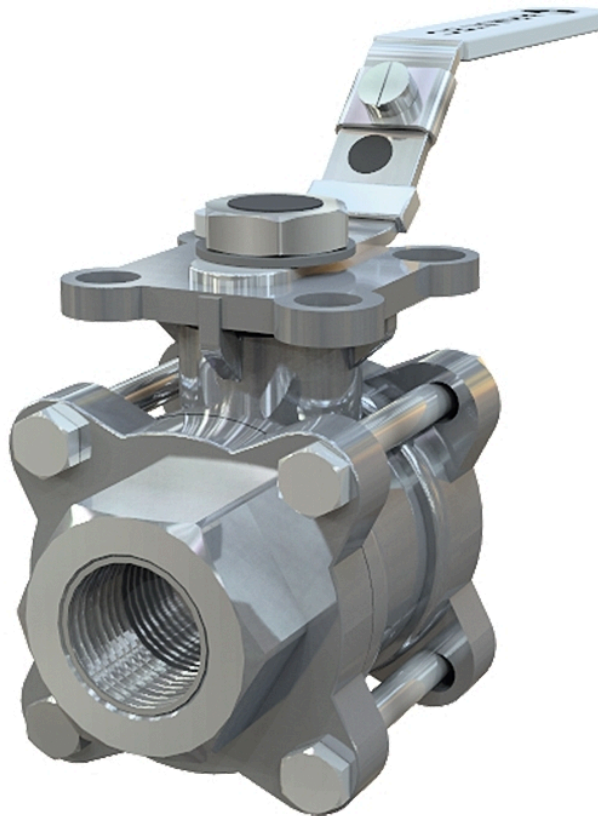


# Ball valve AT 3533-



## Product information

Stainless steel/PTFE ball valve with full bore, internal threads, and mounting flange for actuator. Suitable for automation. Primarily for acids and salt solutions, gas, steam, hot and cold water.



Dimension range (DN)	10 - 50
PN	63
Temperature (°C)	-29 - 180
Main material	Stainless steel

### Area of use

Used for shutting off most liquids and gases that occur in the process industry.

### Tender text

#### PSB.1 Ball valves

Stainless steel ball valve AT 3533... with full bore, internal thread, and stainless steel lever.

### Quality assurance

AFS 2023:5, AFS 2023:5, 8 paragraf, PED 2014/68/EU

**Product marking:** Brand, DN, PN, material code.

### Energy and environment declaration

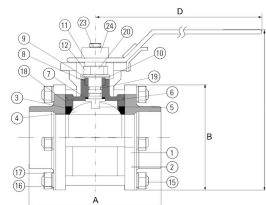
**Product Bvb:** Avoided

**Product BVB ID:** 109938

**SundaHus:** C-

**Reach date:** 6/27/2024 10:32:00 AM

Pos	Component	Material
-----	-----------	----------



## Measurements and weight

Dimension range (DN): 10 - 50

DN	A	B	C	Net weight (kg)
10	75	0	70.9	0.6
15	75	0	70.9	0.6
20	80	0	73.4	0.8
25	90	0	84.1	1.5
32	110	0	89.3	1.9
40	120	0	109.5	3
50	140	0	118.9	4.5

## Function and design

Quality valve, cast in stainless steel with fire-safe design and lockable handle. Three-piece ball valve. Blow-out proof antistatic spindle construction prevents the spindle from being pushed out during pressure surges. Mounting flange according to ISO 5211 for actuators. No valve disassembly required for service and installation of actuators. Valves larger than DN50 have a round valve body/mounting flange.

## Technical data

**Main material:** Stainless steel

**Main material code:** Acid resistant stainless steel AISI 316 (1.4408, CF8M)

**Included materials:** Stainless steel, Other

**Included material code:** Acid resistant stainless steel AISI 316 (1.4408, CF8M) , PTFE (polytetrafluoroethylene)

**Temperature (°C):** -29 - 180

**PN:** 63

**Connection:** Internal thread ISO 228-1 (G, BSPP)

**ETIM classification:** EC011343 - Ball valve

**BK04 code:** 20702 Ball valves

## **Installation and maintenance**

**Flowdirection:** Bi-directional

**Possible mounting position:** Vertical, Horizontal

For information on assembly and maintenance, please refer to the current user manual. The valve should be operated regularly to avoid the accumulation of dirt that can lead to leakage.

The company's management system  
is certified by DNV  
ISO 9001 • ISO 14001

# Get into the flow

Get into the flow with Armatec.



**armatec**

info@armatec.se | +46 31 89 01 00 | www.armatec.se