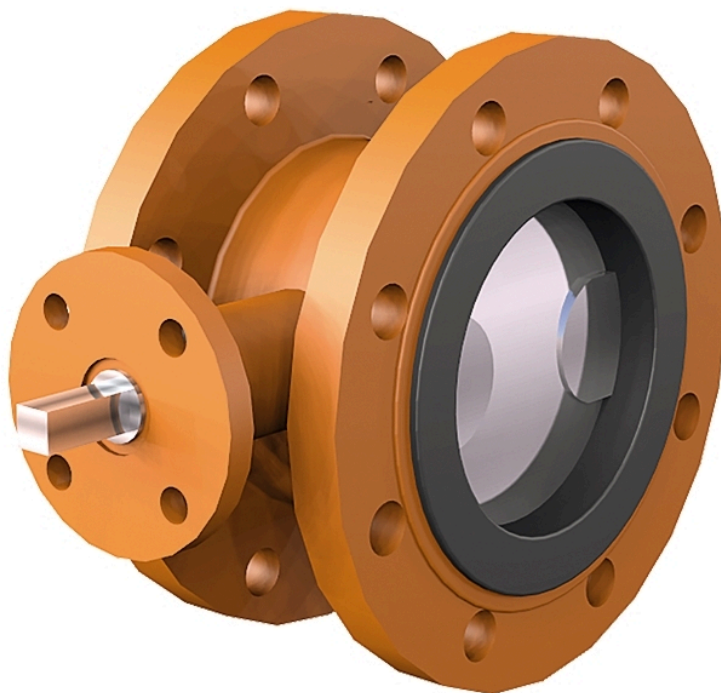


Butterfly valve AT 2344-



Product information

Eurovalve fully-sealing rotary valve, flanged design with NBR rubber lining vulcanized in the housing, also suitable for vacuum and as an end valve against the valve's entire PN, with a hand lever or worm gear.

Dimension range (DN)	50 - 2000
PN	10 - 16
Temperature (°C)	0 - 90
Main material	Ductile iron

Area of use

For the shut-off and regulation of hot and cold water, as well as air and other neutral gases. For example, tap water, wastewater, seawater, oils, and glycol mixtures, see also "Selection of damper valves". NBR lining: 0°C to +90°C. Hydrocarbon compounds with a maximum of 30% aromatics at +20°C, water, powder, air, and neutral gases. EPDM lining: -20°C to +110°C. Tap water, certain alcohols (maximum 30%), certain diluted inorganic acids.

Tender text

PSB.2 Rotary butterfly valves

Butterfly valve AT2344 with a cast iron body and a NBR lining vulcanized into the body, and a valve disc made of aluminum bronze. With flanges (standard PN16 DN50-200, PN10 DN250-1000), suitable as an end valve against full working pressure. AT 234xS with lever standard up to DN150 and gear as standard from DN200.

Quality assurance

AFS 2023:5, PED 2014/68/EU

The product is CE marked

Testing is carried out according to SS-ISO 5208 edition 2, leakage class A applies to the valve type.

Certificate SS-EN 10204, 2.2 and by most classification societies can be provided.

Certificate SS-EN 10204, 3.1 can be provided upon special request.

The desired type of certificate is specified when ordering.

Suitable as an end valve with or without blind flange against full working pressure.

Product marking: Brand, DN, PN, material

Measurements and weight

Dimension range (DN): 50 - 2000

Function and design

Fully sealed maintenance-free butterfly valve with a centrally located disc, split spindle, and a completely housed body with in-house vulcanized rubber lining that eliminates the risk of gap corrosion, protects the valve body internally against corrosion, and serves as a flange gasket. The manufacturing process ensures excellent sealing and increased lifespan as wear of the lining is eliminated. The disc profile is crucial to achieving good flow characteristics, which ultimately minimizes energy losses. The valve is tight regardless of flow direction.

Suitable as an end valve with or without blind flange against full working pressure.

The disc and shaft pins are connected with one or more strong tapered pins.

Construction length according to SS-EN 558, series 13 short

Top flange according to ISO 5211.

Standard surface treatment class C3 according to ISO 12944.

For outdoor installation without rain protection, surface treatment class C4 is recommended.

Technical data

Main material: Ductile iron

Main material code: Ductile iron GJS-400-15 (GGG40)

Included materials: Aluminiumbronze, Rubber, Ductile iron

Included material code: Ductile iron GJS-400-15 (GGG40), NBR (nitrile butadiene rubber)

Temperature (°C): 0 - 90

PN: 10 - 16

Connection: Flanged EN1092

ETIM classification: EC010910 - Butterfly valve

BK04 code: 20706 Single-leaf dampers

Product colour: RAL 2000 - Yellow orange

Installation and maintenance

Flowdirection: Bi-directional

Possible mounting position: Vertical, Horizontal

Possible mounting position notes: "Mounting with a horizontal spindle axis is optimal."

The valve is intended to be mounted between flanges, without gaskets, and where possible with the shafts in a horizontal position. The valve should be operated regularly to avoid the accumulation of dirt that can lead to leakage.

The company's management system
is certified by DNV
ISO 9001 • ISO 14001

Get into the flow

Get into the flow with Armatec.



armatec

info@armatec.se | +46 31 89 01 00 | www.armatec.se