

Product information

High-pressure steel stop valve with butt welded ends, PN160. Used as a shut-off valve for process water, aggressive media, among others. Suitable for industrial applications.

| | |
|----------------------|-----------|
| Dimension range (DN) | 15 - 50 |
| PN | 63 - 160 |
| Temperature (°C) | -10 - 530 |
| Main material | Steel |

Area of use

For applications in industrial installations, hospitals, food and beverages, processing technology, vapour facilities, plant manufacturing. As a shut-off valve for process water, aggressive media, among others.

Tender text

PSB.5 Ball valves and needle valves

Quality assurance

AFS 2023:5, PED 2014/68/EU

The product is CE marked

Product marking: Manufacturer, DN, PN, CE, Material and flow direction

Energy and environment declaration

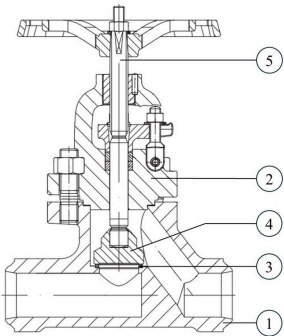
Reach date: 12/3/2024 1:00:14 PM

Reach note: The product is not covered by REACH

List of details

| Pos | Component | Material |
|-----|-----------|--------------------------------------|
| 1 | Body | Steel 16Mo3 (1.5415) |
| 2 | Bonnet | Steel 16Mo3 (1.5415) |
| 3 | Seat | Steel 16Mo3 (1.5415) |
| 4 | Globe | Steel 13CrMo4-5 (1.7335) |
| 5 | Spindle | Martensitic stainless steel (1.4122) |

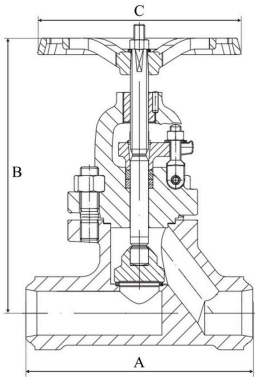
Stellite-reinforced sealing between seat and globe.



Measurements and weight

Dimension range (DN): 15 - 50

| DN | 15 | 20 | 25 | 32 | 40 | 50 |
|-----------------|-----|-----|-----|------|------|------|
| A | 150 | 150 | 160 | 180 | 210 | 250 |
| B | 228 | 228 | 228 | 292 | 292 | 300 |
| C | 180 | 180 | 180 | 225 | 225 | 225 |
| Net weight (kg) | 6.5 | 6.5 | 6.6 | 13.2 | 13.2 | 16.2 |



Function and design

With rising, externally threaded stem. Metal-sealing with a seat reinforced with Stellite.

Max operational pressure and temperature:
160bar at 250°C
139bar at 300°C
125bar at 350°C
118bar at 400°C
112bar at 450°C
72bar at 500°C
35bar at 530°C

Technical data

Main material: Steel
Main material code: Steel 16Mo3 (1.5415)

Included materials: Steel, Stainless steel

Included material code: Martensitic stainless steel (1.4122), Steel 16Mo3 (1.5415), Steel 13CrMo4-5 (1.7335)

Temperature (°C): -10 - 530

PN: 63 - 160

Connection: EN12627, butt weld ends

ETIM classification: EC010120 - Globe valve

| DN | 15 | 20 | 25 | 32 | 40 | 50 |
|-----|-----|-----|-----|------|------|----|
| KVS | 4.2 | 6.4 | 8.6 | 21.8 | 24.2 | 33 |

Installation and maintenance

Flowdirection: Uni-directional

Possible mounting position: Vertical, Horizontal

Can be installed with the stem in any direction, but not with downward-facing handwheel. The preferred stem position is vertical. The system should be flushed before commissioning. The valve should be closed during welding.

Please feel free to contact us

We answer your questions by e-mail and telephone. No question is too small, no challenge is too big. You are always welcome at Armatec.

info@armatec.se | +46 31 89 01 00 | www.armatec.se

THE COMPANY'S MANAGEMENT SYSTEM
IS CERTIFIED BY DNV
ISO 9001 • ISO 14001