



Product information

Ball valve with full bore, made of steel/PTFE with internal threads and mounting flange for actuator. Suitable for automation. Primarily for gas, steam, hot and cold water.

Dimension range (DN)	15 - 50
PN	63
Temperature (°C)	-29 - 180
Main material	Steel

## Area of use

Used for shutting off most liquids and gases found in the process industry, except where stainless material is required.

## Tender text

### **PSB.1 Ball valves**

Steel ball valve AT 3533CSF... with full bore, internal thread, and lever in stainless steel.

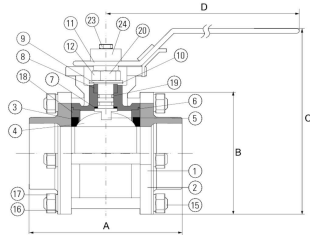
## Quality assurance

AFS 2023:5, AFS 2023:5, 8 paragraf, ATEX 94/9/EG, PED 2014/68/EU

### **The product is CE marked**

**Product marking:** Brand, DN, PN, material code.

Pos	Component	Material
-----	-----------	----------



Measurements and weight

Dimension range (DN): 15 - 50

DN	A	B	C	D	Net weight (kg)
15	75	0	70.9	110	0.6
20	80	0	73.4	110	0.8
25	90	0	84.1	135	1.3
32	110	0	89.3	135	1.9
40	120	0	109.5	165	3
50	140	0	118.9	165	4.5

Function and design

Quality valve, cast in steel with fire-safe design and lockable handle. Three-piece construction. Blow-out proof antistatic spindle construction prevents the spindle from being pushed out during pressure surges. Mounting flange according to ISO 5211 for actuators. No valve disassembly required for service and installation of actuators. Valves larger than DN50 have a round valve body/mounting flange.

Technical data

**Main material:** Steel  
**Included materials:** Stainless steel, Steel, Other  
**Included material code:** Stainless steel AISI 304 (1.4301), Acid resistant stainless steel AISI 316 (1.4401), Steel GP240GH N (1.0619), Carbon filled PTFE  
**Temperature (°C):** -29 - 180  
**PN:** 63  
**Connection:** Internal thread ISO 228-1 (G, BSPP)  
**ETIM classification:** EC011343 - Ball valve  
**BK04 code:** 20702 Ball valves

Installation and maintenance

**Flowdirection:** Bi-directional  
**Possible mounting position:** Vertical, Horizontal  
No disassembly or gasket replacement in connection with welding. The ball valve should be exercised regularly.

### Please feel free to contact us

We answer your questions by e-mail and telephone. No question is too small, no challenge is too big. You are always welcome at Armatec.

[info@armatec.se](mailto:info@armatec.se) | +46 31 89 01 00 | [www.armatec.se](http://www.armatec.se)

THE COMPANY'S MANAGEMENT SYSTEM  
IS CERTIFIED BY DNV  
ISO 9001 • ISO 14001