

Product information

Stainless steel/PTFE ball valve with full bore, welded ends, and mounting flange for actuator. Suitable for automation. Primarily for use with acids and salt solutions, gas, steam, hot and cold water.

Dimension range (DN)	10 - 100
PN	63
Temperature (°C)	-29 - 180
Main material	Stainless steel



## Area of use

Used for shutting off most liquids and gases that occur in the process industry.

## Tender text

### **PSB.1 Ball valves**

Stainless steel ball valve AT 3534... with full bore, welded ends, and stainless steel lever.

## Quality assurance

AFS 2023:5, AFS 2023:5, 8 paragraf, ATEX 94/9/EG, PED 2014/68/EU, SIL3

### **The product is CE marked**

The valves meet the requirements of PED, AFS 2016:1, the directive for pressure-bearing devices, according to category III, fluid group 1 and 2. Dimensions up to DN 25 comply with §8 in PED, AFS 2016:1. ATEX zone 1 and 21 (ATEX 94/9 II GDC IIA & IIB) Design EN12516-1, tested according to EN12266-1, connection according to DIN3239 part 1 and 2, installation dimensions according to DIN3202M3/S13, bolts according to ISO3506.

**Product marking:** Brand, DN, PN, material code.

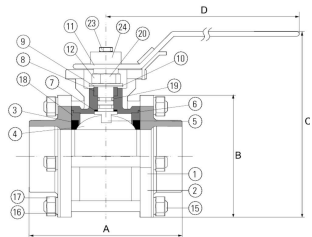
## Energy and environment declaration

**Product Bvb:** Accepted

**Product BVB ID:** 109939

**SundaHus:** C-

Pos	Component	Material
1	Valve body	Acid resistant stainless steel AISI 316 (1.4408, CF8M)
2	Valve ends	Acid resistant stainless steel AISI 316 (1.4408, CF8M)
3	Seat rings	PTFE (polytetrafluoroethylene)
4	Ball	Acid resistant stainless steel AISI 316 (1.4408, CF8M)
5	Stem	Acid resistant stainless steel AISI 316 (1.4408, CF8M)
6	Body/stem packings	PTFE (polytetrafluoroethylene)



Measurements and weight

Dimension range (DN): 10 - 100

DN	A	B	C	Net weight (kg)
10	75		110	0.6
15	75		110	0.6
20	90		110	0.8
25	100		135	1.5
32	110		135	1.9
40	125		165	3
50	150		165	4.5
65	190		240	10
80	220		240	15
100	270		240	25

Function and design

Quality valve, cast in stainless steel with fire-safe design and lockable handle. Three-piece ball valve. Blow-out proof antistatic spindle construction prevents the spindle from being pushed out during pressure surges. Mounting flange according to ISO

5211 for actuators. No valve disassembly required for service and installation of actuators.

Valves larger than DN50 have a circular valve body/mounting flange.

## Technical data

**Main material:** Stainless steel

**Main material code:** Acid resistant stainless steel AISI 316 (1.4408, CF8M)

**Included materials:** Stainless steel

**Included material code:** Acid resistant stainless steel AISI 316 (1.4401), Acid resistant stainless steel AISI 316 (1.4408, CF8M)

**Temperature (°C):** -29 - 180

**PN:** 63

**Connection:** ISO 1127, weld end

**ETIM classification:** EC011343 - Ball valve

**BK04 code:** 20702 Ball valves

## Installation and maintenance

**Flowdirection:** Bi-directional

**Possible mounting position:** Vertical, Horizontal

No disassembly or gasket replacement in connection with welding. However, the ball should be fully open. The valve should be regularly operated to avoid the accumulation of dirt that can lead to leakage.

Please feel free to contact us

We answer your questions by e-mail and telephone. No question is too small, no challenge is too big. You are always welcome at Armatec.

[info@armatec.se](mailto:info@armatec.se) | +46 31 89 01 00 | [www.armatec.se](http://www.armatec.se)

THE COMPANY'S MANAGEMENT SYSTEM  
IS CERTIFIED BY DNV  
ISO 9001 • ISO 14001