

## Product information

Needle valve for shut off and regulating steam, gases and liquids. Fitted with a locking collar that prevents the packing box nut and stem from loosening during operation and vibration. The valves are internally threaded with rising stem and knob.

Dimension range (DN)	8 - 15
PN	400
Temperature (°C)	0 - 300
Main material	Stainless steel

## Area of use

For shut off off and regulating

- steam
- gases
- liquids

## Tender text

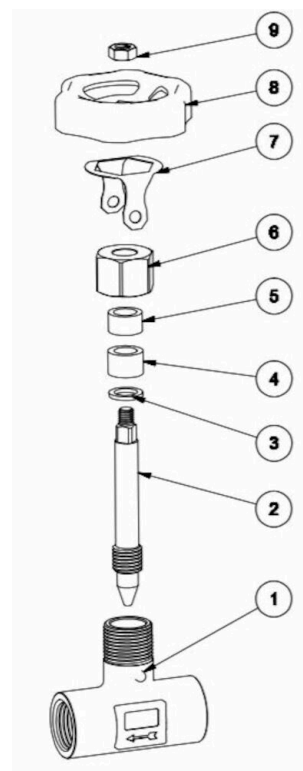
**PSB.5 Ball valves and needle valves**

## Quality assurance

AFS 2023:5, 8 paragraf, PED 2014/68/EU art 4.3

**Product marking:** DN, PN and flow direction arrow.

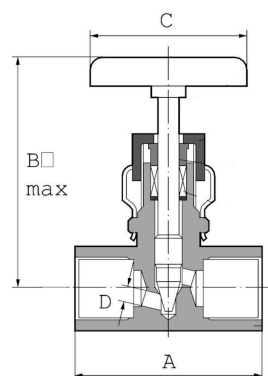
Pos	Component	Material
1	Valve body	Acid resistant stainless steel AISI 316 (1.4401)
2	Stem	Acid resistant stainless steel AISI 316 (1.4401)
3	Gasket	Acid resistant stainless steel AISI 316 (1.4401)
4	Gland	PTFE (polytetrafluoroethylene)
5	Bushing	Acid resistant stainless steel AISI 316 (1.4401)
6	stuffing box nut	Acid resistant stainless steel AISI 316 (1.4401)
7	Locking shackle	Acid resistant stainless steel AISI 316 (1.4401)
8	Handwheel	



## Measurements and weight

**Dimension range (DN):** 8 - 15

DN	A	B	C	Net weight (kg)
8	59	82.8	58	0.487
10	59	82.8	58	0.487
15	59	82.8	58	0.487



## Function and design

Fitted with a locking collar that prevents the packing box nut and stem from loosening during manoeuvring and vibration. The valves have internal spindle threading with rising stem and knob.

## Technical data

**Main material:** Stainless steel

**Main material code:** Acid resistant stainless steel AISI 316 (1.4401)

**Included materials:** Stainless steel, Rubber, Other

**Included material code:** Acid resistant stainless steel AISI 316 (1.4401), PTFE (polytetrafluoroethylene)

**Temperature (°C):** 0 - 300

**PN:** 400

**Connection:** Internal thread ISO 228-1 (G, BSPP)

**ETIM classification:** EC010120 - Globe valve

---

## Installation and maintenance

**Flowdirection:** Bi-directional

**Possible mounting position:** Vertical, Horizontal

### Please feel free to contact us

We answer your questions by e-mail and telephone. No question is too small, no challenge is too big. You are always welcome at Armatec.

[info@armatec.se](mailto:info@armatec.se) | +46 31 89 01 00 | [www.armatec.se](http://www.armatec.se)

THE COMPANY'S MANAGEMENT SYSTEM  
IS CERTIFIED BY DNV  
ISO 9001 • ISO 14001