

# Ball valve AT 3534- CSF



## Product information

Ball valve with full bore, made of steel/PTFE with welded ends and mounting flange for actuator. Suitable for automation. Primarily for gas, steam, hot and cold water.

<b>Dimension range (DN)</b>	15 - 100
<b>PN</b>	63
<b>Temperature (°C)</b>	-29 - 180
<b>Main material</b>	Steel

### Area of use

Used for shutting off most liquids and gases found in the process industry, except where stainless material is required.

### Tender text

#### PSB.1 Ball valves

Steel ball valve AT 3534CSF... with full bore, welded ends, and lever in stainless steel.

### Quality assurance

AFS 2023:5, PED 2014/68/EU

**The product is CE marked**

**Product marking:** Brand, DN, PN, material code.

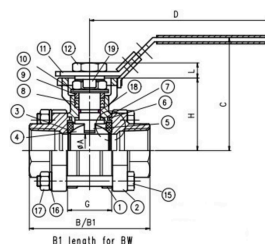
### Energy and environment declaration

**Subject to notification under REACH:** No

**Reach date:** 24/04/2026

### 3534-CSF, List of details

Pos	Component	Material
1	Valve body	Steel GP240GH N (1.0619)
2	Valve ends	Steel GP240GH N (1.0619)
3	Seat rings	Carbon filled PTFE
4	Ball	Acid resistant stainless steel AISI 316 (1.4408, CF8M)



### Measurements and weight

Dimension range (DN): 15 - 100

### 3534-CSF, Measurements

Item number	B1	C	D	H	L	Net weight (kg)
3534CSF15	75	70.9	110	42.3	21.9	0.6
3534CSF20	90	73.4	110	44.8	8	0.8
3534CSF25	100	84.1	135	54	10	1.3
3534CSF32	110	89.3	135	59.2	10	1.9
3534CSF40	125	109.5	165	73.5	14.8	3
3534CSF50	150	118.9	165	82.9	14.8	4.5
3534CSF65	190		240			9.8
3534CSF80	220		240			15
3534CSF100	270		240			24.5

### Function and design

Quality valve, cast in steel with fire-safe design and lockable handle. Three-piece ball valve. Blow-out proof antistatic spindle construction prevents the spindle from being pushed out during pressure surges. Mounting flange according to ISO 5211 for actuators. No valve disassembly required for service and installation of actuators. Valves larger than DN50 have a circular valve body/mounting flange.

### Technical data

**Main material:** Steel

**Main material code:** Steel GP240GH N (1.0619)

**Included materials:** Steel, Stainless steel, Plastic, Rubber, Other

**Included material code:** Acid resistant stainless steel AISI 316 (1.4408, CF8M), Austenitic stainless steel AISI 301 (1.4310), Carbon filled PTFE, FPM/FKM (fluorine rubber), PVC (polyvinyl chloride), Stainless steel AISI 304 (1.4301), Steel GP240GH N (1.0619)

**Temperature (°C):** -29 - 180

**PN:** 63

**Connection:** ISO 1127, weld end

**ETIM classification:** EC011343 - Ball valve

**BK04 code:** 20702 Ball valves

**Comment to colour:** Black

### 3534-CSF, Technical data

Item number	KVS	Execution	Connection 1	Connection 1 - spec.	Connection 2	Connection 2 - spec.	Connection according to ISO 5211	Stem measurements
3534CSF15	36	Full bore	ISO 1127, weld end	DN15-Dy 21,3mm	ISO 1127, weld end	DN15-Dy 21,3mm	F03/F04	9x9mm
3534CSF20	59	Full bore	ISO 1127, weld end	DN20-Dy 26,9mm	ISO 1127, weld end	DN20-Dy 26,9mm	F03/F04	9x9mm
3534CSF25	90	Full bore	ISO 1127, weld end	DN25-Dy 33,7mm	ISO 1127, weld end	DN25-Dy 33,7mm	F04/F05	11x11mm
3534CSF32	159	Full bore	ISO 1127, weld end	DN32-Dy 42,4mm	ISO 1127, weld end	DN32-Dy 42,4mm	F04/F05	11x11mm
3534CSF40	230	Full bore	ISO 1127, weld end	DN40-Dy 48,3mm	ISO 1127, weld end	DN40-Dy 48,3mm	F05/F07	14x14mm
3534CSF50	418	Full bore	ISO 1127, weld end	DN50-Dy 60,3mm	ISO 1127, weld end	DN50-Dy 60,3mm	F05/F07	14x14mm
3534CSF65	725	Full bore	ISO 1127, weld end	DN65-Dy 76,1mm	ISO 1127, weld end	DN65-Dy 76,1mm	F07/F10	17x17mm
3534CSF80	1098	Full bore	ISO 1127, weld end	DN80-Dy 88,9mm	ISO 1127, weld end	DN80-Dy 88,9mm	F07/F10	17x17mm
3534CSF100	1768	Full bore	ISO 1127, weld end	DN100-Dy 114,3mm	ISO 1127, weld end	DN100-Dy 114,3mm	F07/F10	17x17mm

### Installation and maintenance

**Flowdirection:** Bi-directional

**Possible mounting position:** Vertical, Horizontal

For information on assembly and maintenance, please refer to the current user manual. The valve should be operated regularly to avoid the accumulation of dirt that can lead to leakage.

The company's management system  
is certified by DNV  
ISO 9001 • ISO 14001

# Get into the flow

Get into the flow with Armatec.



**armatec**

info@armatec.se | +46 31 89 01 00 | www.armatec.se