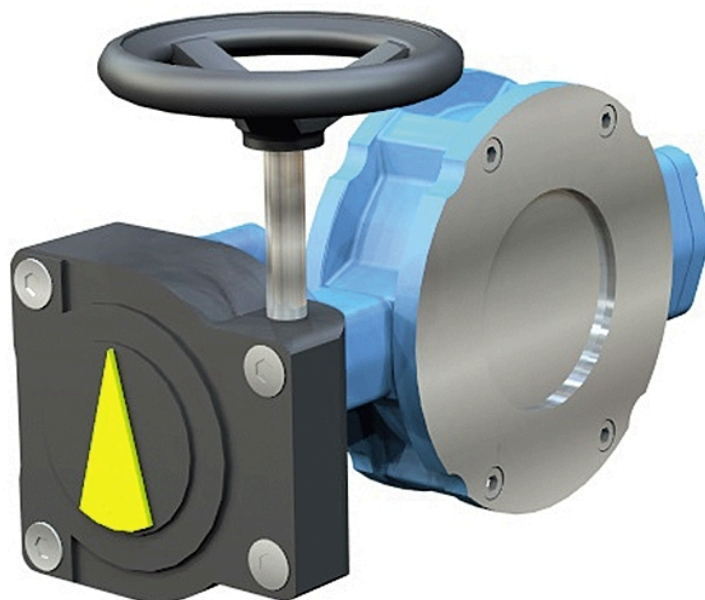


# Butterflyvalve AT 2275B



## Product information

Butterfly valve for clamping, made of steel, with metallic sealing. Used for shut-off and regulation in hot water, cooling, oil, pulp, and steam systems.

<b>Dimension range (DN)</b>	80 - 800
<b>PN</b>	10 - 25
<b>Temperature (°C)</b>	-40 - 260
<b>Main material</b>	Steel

### Area of use

For shutdown and regulation

For oil, water and steam within:

- Energy production, Petrochemical industry, Hot water systems, Cooling systems, Oil storage and refineries, Steam systems, Pulp.

### Tender text

#### PSB.2 Rotary butterfly valves

Butterfly valve AT 2275B.... Steel housing for clamping, metallic sealing, Leakage class B, closing pressure DeltaP 16bar.

Butterfly valve AT 2275BxxxxA.... Steel housing for clamping, metallic sealing, Leakage class A, closing pressure DeltaP 16bar.

Butterfly valve AT 2275BxxxxA25.... Steel housing for clamping, metallic sealing, Leakage class A, closing pressure DeltaP 25bar.

Butterfly valve AT 2275BxxxxT.... Steel housing for clamping, PTFE sealing, Leakage class A, closing pressure DeltaP 16bar.

Butterfly valve AT 2275BxxxxT25.... Steel housing for clamping, PTFE sealing, Leakage class A, closing pressure DeltaP 25bar.

Butterfly valve AT 2275Bx40-xxx.... Steel housing for clamping, metallic sealing, Leakage class B, PN40, closing pressure DeltaP 40bar.

Butterfly valve AT 2275Bx40-xxxA.... Steel housing for clamping, metallic sealing, Leakage class A, PN40, closing pressure DeltaP 40bar.

Butterfly valve AT 2275B.... Steel housing for clamping, metallic sealing, Leakage class B, closing pressure DeltaP 16bar, version for steam applications.

Butterfly valve AT 2275BxxxxA.... Steel housing for clamping, metallic sealing, Leakage class A, closing pressure DeltaP 16bar, version for steam applications.

Butterfly valve AT 2275BxxxxA25.... Steel housing for clamping, metallic sealing, Leakage class A, closing pressure DeltaP 25bar, version for steam applications.

Butterfly valve AT 2275Bx40-xxx.... Steel housing for clamping, metallic sealing, Leakage class B, PN40, closing pressure DeltaP 40bar, version for steam applications.

Butterfly valve AT 2276Bx40-xxxA.... Steel housing for clamping, metallic sealing, Leakage class A, PN40, closing pressure DeltaP 40bar, version for steam applications.

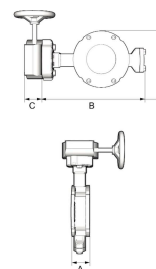
### **Quality assurance**

AFS 2023:5, PED 2014/68/EU

#### **The product is CE marked**

**Product marking:** On the valve's nameplate, there is information about: DN, PN, material in pressure-bearing parts, flow direction arrow, type designation, and CE marking.

**Pos**                      **Component**                      **Material**



## Measurements and weight

**Dimension range (DN):** 80 - 800

DN	80	125	150	250	300
A	46	56	56	68	78
B	207	242	287	357	401
Net weight (kg)	8	10.9	17	39.8	57.8

## Function and design

Metallic sealing butterfly valve for clamping between flanges. Top flange according to ISO5211 for mounting of actuators or worm gears. The disc is double eccentric, which means that the disc leaves the seat immediately upon opening. This results in minimal wear of sealing surfaces. The valve also does not lose its sealing even if it is frequently operated. The packing box is adjustable.

## Technical data

**Main material:** Steel

**Main material code:** Steel GP240GH N (1.0619)

**Included materials:** Stainless steel, Steel

**Included material code:** Acid resistant stainless steel AISI 316 (1.4408, CF8M) , Steel GP240GH N (1.0619)

**Temperature (°C):** -40 - 260

**Temperature notes:** Available with a solidified shaft for higher temperatures and in a version suitable for steam.

**PN:** 10 - 25

**Connection:** Flanged EN1092

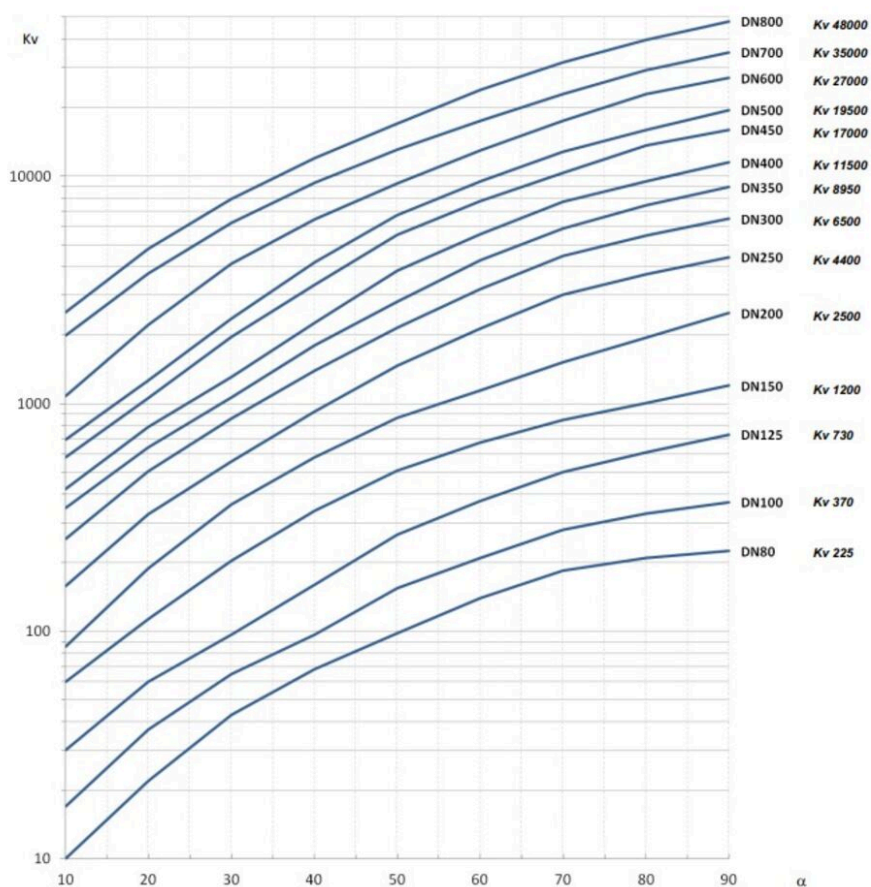
**ETIM classification:** EC010910 - Butterfly valve

**BK04 code:** 20706 Single-leaf dampers

**ProductColourAndColourNote:** .

## Flow curves

Indicating typical Kv values.



## Installation and maintenance

**Flowdirection:** Bi-directional

**Possible mounting position:** Vertical, Horizontal

Warning!

Make sure that no one can harm themselves during the test operation of the valve outside the piping system. No fingers, hands, or other body parts should be inside the valve when the actuator is connected. The valve is intended to be mounted between flanges. The valve can be mounted regardless of the flow direction. However, the valve should be mounted with the spindle horizontally. The valve should be operated regularly to avoid the accumulation of dirt that can lead to leakage.

The company's management system  
is certified by DNV  
ISO 9001 • ISO 14001

# Get into the flow

Get into the flow with Armatec.



**armatec**

info@armatec.se | +46 31 89 01 00 | www.armatec.se