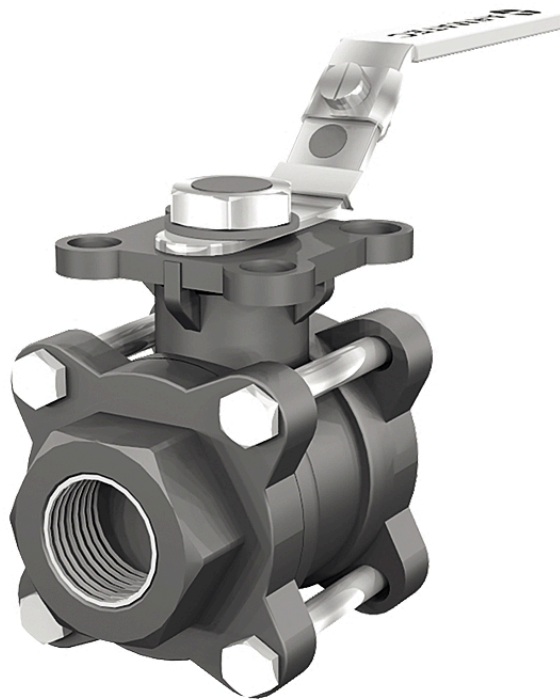


Ball valve AT 3533- CSF



Product information

Ball valve with full bore, made of steel/PTFE with internal threads and mounting flange for actuator. Suitable for automation. Primarily for gas, steam, hot and cold water.

Dimension range (DN)	15 - 50
PN	63
Temperature (°C)	-29 - 180
Main material	Steel

Area of use

Used for shutting off most liquids and gases found in the process industry, except where stainless material is required.

Tender text

PSB.1 Ball valves

Steel ball valve AT 3533CSF... with full bore, internal thread, and lever in stainless steel.

Quality assurance

AFS 2023:5, AFS 2023:5, 8 paragraf, ATEX 94/9/EG, PED 2014/68/EU

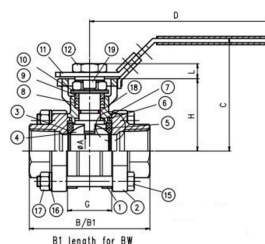
The product is CE marked

Product marking: Brand, DN, PN, material code.

Energy and environment declaration

Reach date: 4/16/2026 12:29:00 PM

Pos	Component	Material
1	Valve body	Steel GP240GH N (1.0619)
2	Valve caps	Steel GP240GH N (1.0619)
3	Seat rings	Carbon filled PTFE
4	Ball	Acid resistant stainless steel AISI 316 (1.4408, CF8M)
5	Stem	Acid resistant stainless steel AISI 316 (1.4408, CF8M)
6	Stem packing	PTFE (polytetrafluoroethylene)
7	Bolts, nuts and washers (9-17)	Stainless steel AISI 304 (1.4301)
8	Lever	Stainless steel AISI 304 (1.4301)



Measurements and weight

Dimension range (DN): 15 - 50

Item number	B	C	D	H	L	Net weight (kg)
3533CSF15	75	70.9	110	42.3	8	0.6
3533CSF20	80	73.4	110	44.8	8	0.8
3533CSF25	90	84.1	135	54	10	1.3
3533CSF32	110	89.3	135	59.2	10	1.9
3533CSF40	120	109.5	165	73.5	14.8	3
3533CSF50	140	118.9	165	82.9	14.8	4.5

Function and design

Quality valve, cast in steel with fire-safe design and lockable handle. Three-piece construction. Blow-out proof antistatic spindle construction prevents the spindle from being pushed out during pressure surges. Mounting flange according to ISO 5211 for actuators. No valve disassembly required for service and installation of actuators. Valves larger than DN50 have a round valve body/mounting flange.

Technical data

Main material: Steel

Main material code: Steel GP240GH N (1.0619)

Included materials: Steel, Stainless steel, Plastic, Rubber, Other

Included material code: Acid resistant stainless steel AISI 316 (1.4401), Austenitic stainless steel AISI 301 (1.4310), Carbon filled PTFE, FPM/FKM (fluorine rubber), PVC (polyvinyl chloride), Stainless steel AISI 304 (1.4301), Steel GP240GH N (1.0619)

Temperature (°C): -29 - 180

PN: 63

Connection: Internal thread ISO 228-1 (G, BSPP)

ETIM classification: EC011343 - Ball valve

BK04 code: 20702 Ball valves

Comment to colour: Black

ProductColourAndColourNote: . Black

Technical data

Item number	KVS	Execution	Connection 1	Connection 1 - spec.	Connection 2	Connection 2 - spec.	Connection according to ISO 5211	Stem measurements
3533CSF15	36	Full bore	Internal thread ISO 228-1 (G, BSPP)	1/2	Internal thread ISO 228-1 (G, BSPP)	1/2	F03/F04	9x9mm
3533CSF20	59	Full bore	Internal thread ISO 228-1 (G, BSPP)	3/4	Internal thread ISO 228-1 (G, BSPP)	3/4	F03/F04	9x9mm
3533CSF25	90	Full bore	Internal thread ISO 228-1 (G, BSPP)	1	Internal thread ISO 228-1 (G, BSPP)	1	F04/F05	11x11mm
3533CSF32	159	Full bore	Internal thread ISO 228-1 (G, BSPP)	1 1/4	Internal thread ISO 228-1 (G, BSPP)	1 1/4	F04/F05	11x11mm
3533CSF40	230	Full bore	Internal thread ISO 228-1 (G, BSPP)	1 1/2	Internal thread ISO 228-1 (G, BSPP)	1 1/2	F05/F07	14x14mm
3533CSF50	418	Full bore	Internal thread ISO 228-1 (G, BSPP)	2	Internal thread ISO 228-1 (G, BSPP)	2	F05/F07	14x14mm

Installation and maintenance

Flowdirection: Bi-directional

Possible mounting position: Vertical, Horizontal

No disassembly or gasket replacement in connection with welding. The ball valve should be exercised regularly.

The company's management system
is certified by DNV
ISO 9001 • ISO 14001

Get into the flow

Get into the flow with Armatec.



armatec

info@armatec.se | +46 31 89 01 00 | www.armatec.se