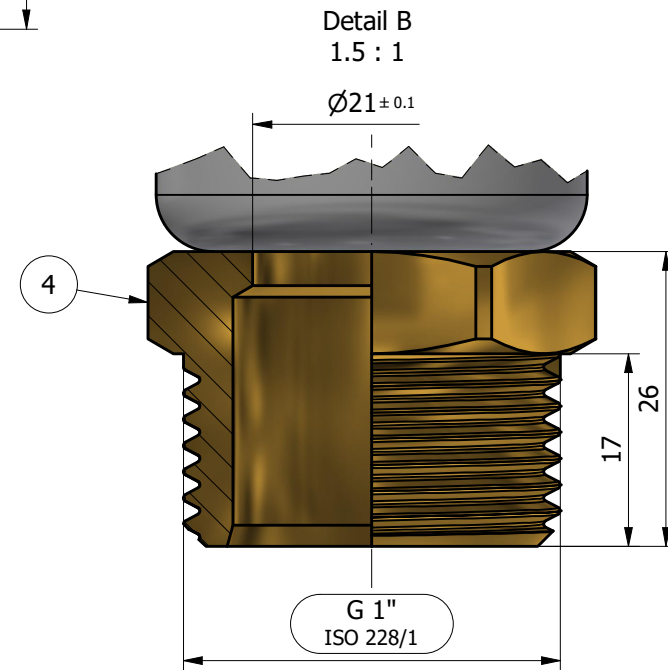
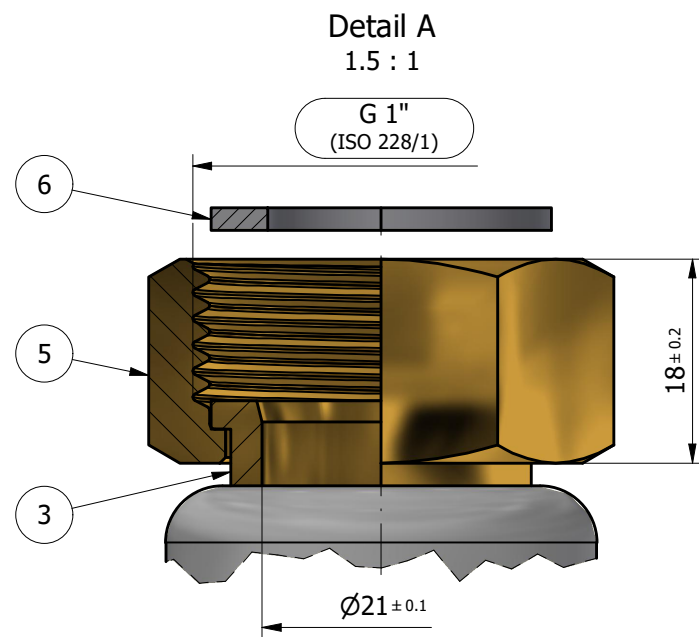
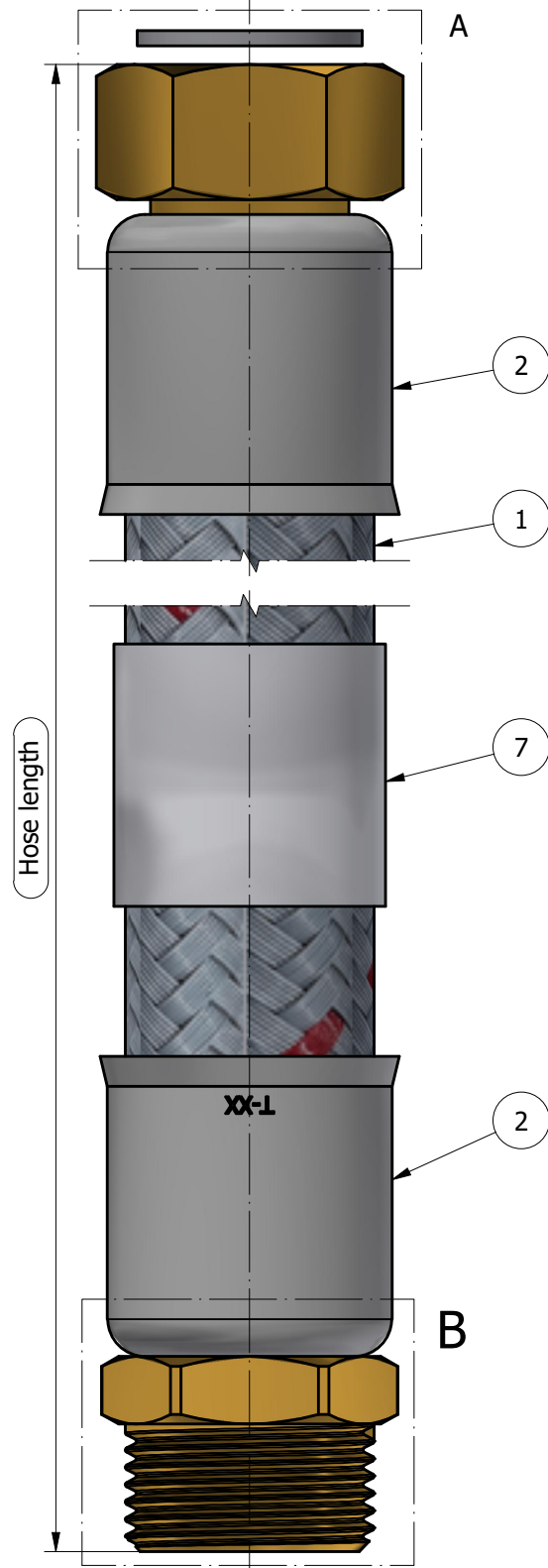
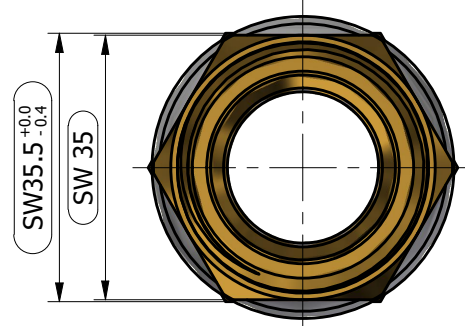


DN25



3D View
1 : 3



Item	Qty	Part Number	Description	Material	Treatment
1	1	24370	PIPE TWIST O2B ACB DN25	Corrugated PERT O2B Barrier Braiding PET	-
2	2	11592	SLEEVE DN25-H40-ID40	Stainless Steel AISI 304 Acc. ASTM A580-A	-
3	1	23816	NIPPLE G1" Mltr.Cil. DN25	Brass CW617N Acc. EN-12164 and ET041	-
4	1	23817.9	FITTING G1" DN25	Brass CW617N Acc. EN-12164 and ET041	Blasting
5	1	10107.9	NUT-G1"-H18-35.5	Brass CW617N Acc. EN-12164 and ET041	Blasting
6	1	12963	WASHER G1"	FIBER	-
7	1	13436	LABEL	Polypropylene (PP)	-

Part Number	Description	Hose length	ARMATEC Ref.	ARMATEC Description
212224	EXTRA-TWIST-O2B-ACB-MG-1-200-ARMATEC	205 ± 5	5745AKF252001101	Slang AKF DN25 200 inv 1" x utv 1"
212225	EXTRA-TWIST-O2B-ACB-MG-1-400-ARMATEC	405 ± 5	5745AKF254001101	Slang AKF DN25 400 inv 1" x utv 1"
212226	EXTRA-TWIST-O2B-ACB-MG-1-600-ARMATEC	610 ± 10	5745AKF256001101	Slang AKF DN25 600 inv 1" x utv 1"
212227	EXTRA-TWIST-O2B-ACB-MG-1-800-ARMATEC	810 ± 10	5745AKF258001101	Slang AKF DN25 800 inv 1" x utv 1"
212228	EXTRA-TWIST-O2B-ACB-MG-1-1000-ARMATEC	1010 ± 10	5745AKF2510001101	Slang AKF DN25 1000 inv 1" x utv 1"
212229	EXTRA-TWIST-O2B-ACB-MG-1-1200-ARMATEC	1215 ± 15	5745AKF2512001101	Slang AKF DN25 1200 inv 1" x utv 1"
212230	EXTRA-TWIST-O2B-ACB-MG-1-1500-ARMATEC	1520 ± 20	5745AKF2515001101	Slang AKF DN25 1500 inv 1" x utv 1"
212231	EXTRA-TWIST-O2B-ACB-MG-1-2000-ARMATEC	2030 ± 30	5745AKF2520001101	Slang AKF DN25 2000 inv 1" x utv 1"

General Notes:

- All dimensions are in mm.
- Product marking according to Tucai Engineering Standard ET-050.
- Pressing parameters according to Tucai Engineering Standard ET-035.
- Width across flat surfaces according to DIN 475-1.
- General and geometrical tolerances according to ISO 2768-mK.
- Surface texture according to ISO 1302.
- Hose length not to scale.
- Packaging specific for client - No mention of Tucai in packaging.
- Attach washer with elastic band.
- Working Parameters:
 - Minimum operating temperature: -20°C
 - Maximum operating temperature: 90°C
 - Maximum operating pressure: 10 bar

NON TOLERANCED DIMENSIONS acc. EN 22768-m from 0 to 6 mm. ± 0.1 from 6 to 30 mm. ± 0.2 from 30 to 120 mm. ± 0.3 from 120 to 400 mm. ± 0.5	NON TOLERANCED DIMENSIONS acc. EN 22768-m from 0 to 3 mm. ± 0.2 from 3 to 10 mm. ± 0.5 from 10 to 50 mm. ± 1.0 from 50 to 120 mm. ± 1.0 from 120 to 400 mm. ± 1.0	NON TOLERANCED DIMENSIONS acc. EN 22768-m from 0 to 3 mm. ± 0.2 from 3 to 10 mm. ± 0.5 from 10 to 50 mm. ± 1.0 from 50 to 120 mm. ± 1.0 from 120 to 400 mm. ± 1.0	NON TOLERANCED DIMENSIONS acc. EN 22768-m from 0 to 3 mm. ± 0.2 from 3 to 10 mm. ± 0.5 from 10 to 50 mm. ± 1.0 from 50 to 120 mm. ± 1.0 from 120 to 400 mm. ± 1.0
---	--	--	--

a	05/12/2024	Initial release	9775	JMA	DDO
REV	DATE	DESCRIPTION	PET	DESIGNER	CHECKED BY

DESIGNER	JMA	05/12/2024	<h1>HOSE ASSEMBLY</h1>
APPROVED BY	DDO	05/12/2024	



EXTRA-TWIST-O2B-ACB-MG-1-ARMATEC

Code
212224-T