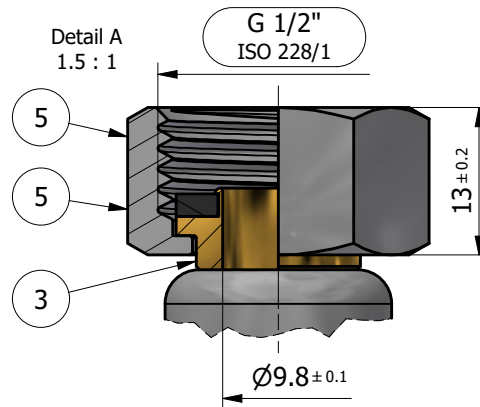
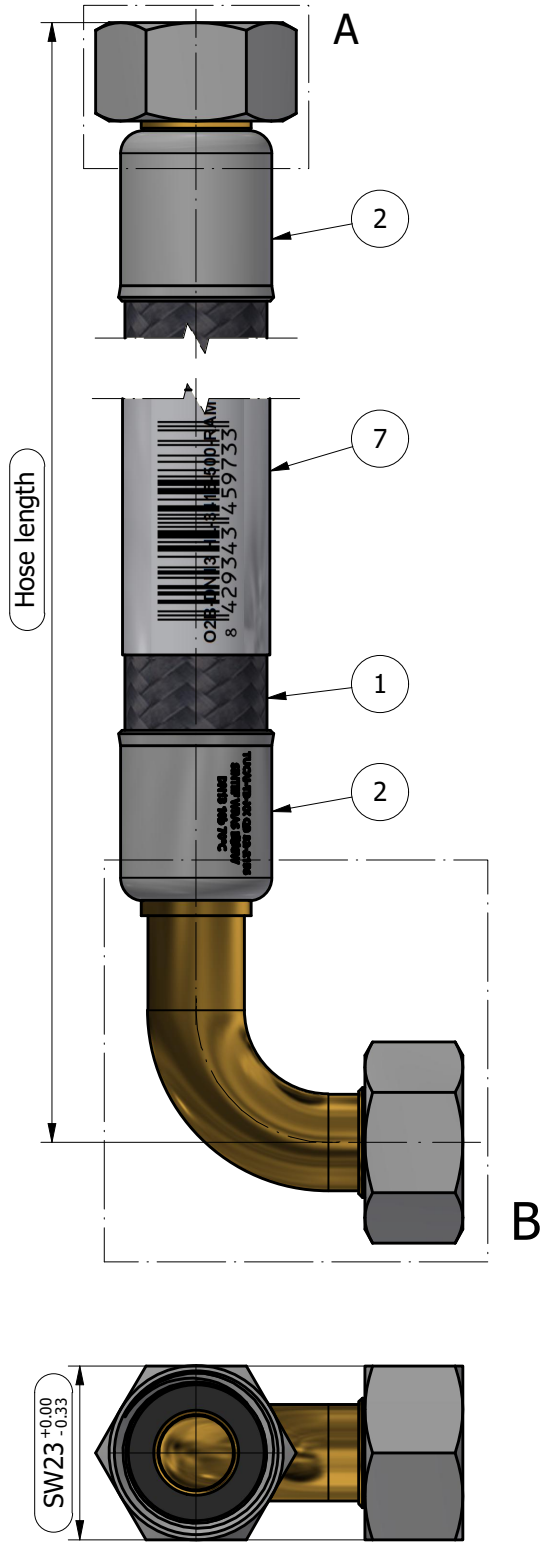


DN13

DZR

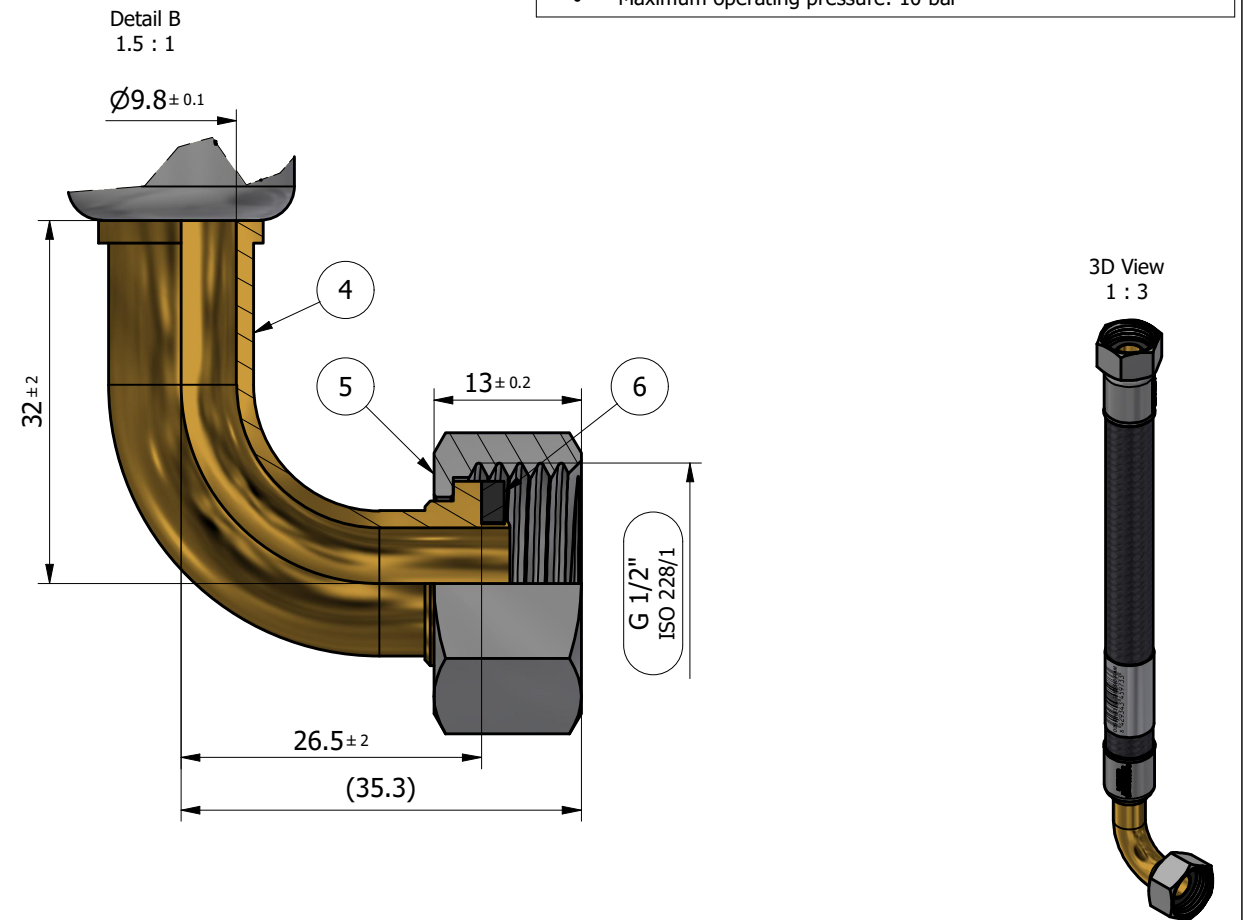
NON TOLERANCED DIMENSIONS acc. EN 22768-m from 0 to 6 mm. ± 0.1 from 6 to 30 mm. ± 0.2 from 30 to 120 mm. ± 0.3 from 120 to 400 mm. ± 0.5	NON TOLERANCED DIMENSIONS acc. EN 22768-m from 120 to 400 mm. ± 0.5	ROOTS AND CHAMFER acc. EN 22768-m up to 3 mm. ± 0.2	NON TOLERANCED ANGLES acc. EN 22768-m Length (mm) of the shorter side of the angle concerned from 10 to 50 mm. ± 20' from 50 to 120 mm. ± 30' from 120 to 400 mm. ± 10'	INSPECTION DIMENSION
BRASS MATERIAL SHALL BE STRESS RELIEVED	NON TOLERANCED DIMENSIONS acc. EN 22768-m from 30 to 120 mm. ± 0.3 from 120 to 400 mm. ± 0.5	GENERAL SURFACE ROUGHNESS Ra 3.2	NON TOLERANCED DIMENSIONS acc. EN 22768-m over 3 mm. ± 0.5	NON TOLERANCED DIMENSIONS acc. EN 22768-m up to 10 mm. ± 1'




Item	Qty	Part Number	Description	Material	Treatment
1	1	24400	TUBE TWIST ACB DN13	Corrugated PE-RT Braiding ACB	-
2	2	24451	SLEEVE DN13	Stainless Steel AISI 304 Acc. ASTM A580-A	Annealed & Polished
3	1	24045	NIPPLE G1/2" DN13	Brass CW626N acc. EN-12164 and ET043	-
4	1	24858	ELBOW G1/2" DN13	Brass CW626N acc. EN-12164 and ET043	Nickel-Plated
5	2	10393.3	NUT G1/2" H13	Brass CW617N Acc. EN-12164 and ET041	Light blasting + Nickel-Plated
6	2	11823	WASHER G1/2"	EPDM ACS/KIWA/NSF/KTW	-
7	1	14661	NEUTRAL LABEL	Polypropylene (PP)	-

Part Number	Description	Hose length	ARMATEC Reference	ARMATEC Description
212165	SUPER-TWIST-ACB-CODO-HG-1212-200-ARMATEC	205 ± 5	5745AKF13200121209	Slang AKF DN13 200 inv 1/2" x 90° inv 1/2"
212166	SUPER-TWIST-ACB-CODO-HG-1212-400-ARMATEC	405 ± 5	5745AKF13400121209	Slang AKF DN13 400 inv 1/2" x 90° inv 1/2"
212167	SUPER-TWIST-ACB-CODO-HG-1212-600-ARMATEC	610 ± 10	5745AKF13600121209	Slang AKF DN13 600 inv 1/2" x 90° inv 1/2"
212168	SUPER-TWIST-ACB-CODO-HG-1212-700-ARMATEC	710 ± 10	5745AKF13700121209	Slang AKF DN13 700 inv 1/2" x 90° inv 1/2"
212169	SUPER-TWIST-ACB-CODO-HG-1212-800-ARMATEC	810 ± 10	5745AKF13800121209	Slang AKF DN13 800 inv 1/2" x 90° inv 1/2"
212170	SUPER-TWIST-ACB-CODO-HG-1212-1000-ARMATEC	1010 ± 10	5745AKF131000121209	Slang AKF DN13 1000 inv 1/2" x 90° inv 1/2"

- General Notes:**
- All dimensions are in mm.
 - Product marking according to Tucai Engineering Standard ET-050.
 - Pressing parameters according to Tucai Engineering Standard ET-035.
 - Width across flat surfaces according to DIN 475-1.
 - General and geometrical tolerances according to ISO 2768-mK.
 - Surface texture according to ISO 1302.
 - Hose length not to scale.
 - Packaging specific for client - No mention of Tucai in packaging.
 - Working Parameters:
 - Minimum operating temperature: -20°C
 - Maximum operating temperature: 90°C
 - Maximum operating pressure: 10 bar



a	03/12/2024	Initial release	9775	JMA	DDO
REV	DATE	DESCRIPTION	PET	DESIGNER	CHECKED BY
DESIGNER	JMA	01/07/2024	<h1>HOSE ASSEMBLY</h1>		
APPROVED BY	DDO	01/07/2024			
 www.tucai.com			SUPER-TWIST-ACB-CODO HG-1212-ARMATEC		Code 212165-T