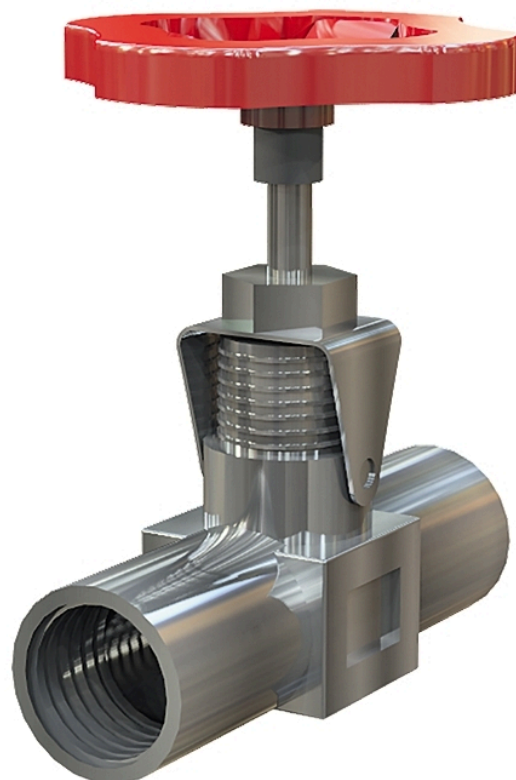


# Needle valve AT 1890B



## Product information

Needle valve for shut off and regulating steam, gases and liquids. Fitted with a locking collar that prevents the packing box nut and stem from loosening during operation and vibration. The valves are internally threaded with rising stem and knob.

<b>Dimension range (DN)</b>	8 - 15
<b>PN</b>	400
<b>Temperature (°C)</b>	0 - 300
<b>Main material</b>	Stainless steel

### Area of use

For shut off off and regulating

- steam
- gases
- liquids

### Tender text

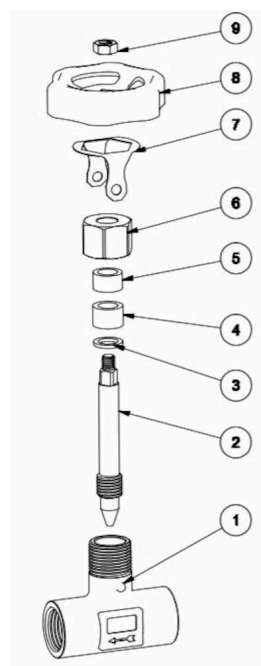
**PSB.5 Ball valves and needle valves**

### Quality assurance

AFS 2023:5, 8 paragraf, PED 2014/68/EU art 4.3

**Product marking:** DN, PN and flow direction arrow.

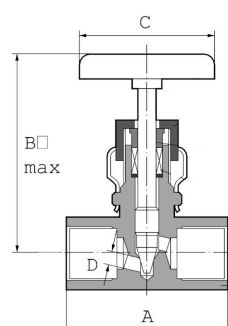
Pos	Component	Material
1	Valve body	Acid resistant stainless steel AISI 316 (1.4401)
2	Stem	Acid resistant stainless steel AISI 316 (1.4401)
3	Gasket	Acid resistant stainless steel AISI 316 (1.4401)
4	Gland	PTFE (polytetrafluoroethylene)
5	Bushing	Acid resistant stainless steel AISI 316 (1.4401)
6	stuffing box nut	Acid resistant stainless steel AISI 316 (1.4401)
7	Locking shackle	Acid resistant stainless steel AISI 316 (1.4401)
8	Handwheel	



## Measurements and weight

Dimension range (DN): 8 - 15

DN	A	B	C	Net weight (kg)
8	59	82.8	58	0.487
10	59	82.8	58	0.487
15	59	82.8	58	0.487



## Function and design

Fitted with a locking collar that prevents the packing box nut and stem from loosening during manoeuvring and vibration. The valves have internal spindle threading with rising stem and knob.

## Technical data

**Main material:** Stainless steel

**Main material code:** Acid resistant stainless steel AISI 316 (1.4401)

**Included materials:** Stainless steel, Rubber, Other

**Included material code:** Acid resistant stainless steel AISI 316 (1.4401), PTFE (polytetrafluoroethylene)

**Temperature (°C):** 0 - 300

**PN:** 400

**Connection:** Internal thread ISO 228-1 (G, BSPP)

**ETIM classification:** EC010120 - Globe valve

## Installation and maintenance

**Flowdirection:** Bi-directional

**Possible mounting position:** Vertical, Horizontal

The company's management system  
is certified by DNV  
ISO 9001 • ISO 14001

# Get into the flow

Get into the flow with Armatec.



**armatec**

info@armatec.se | +46 31 89 01 00 | www.armatec.se