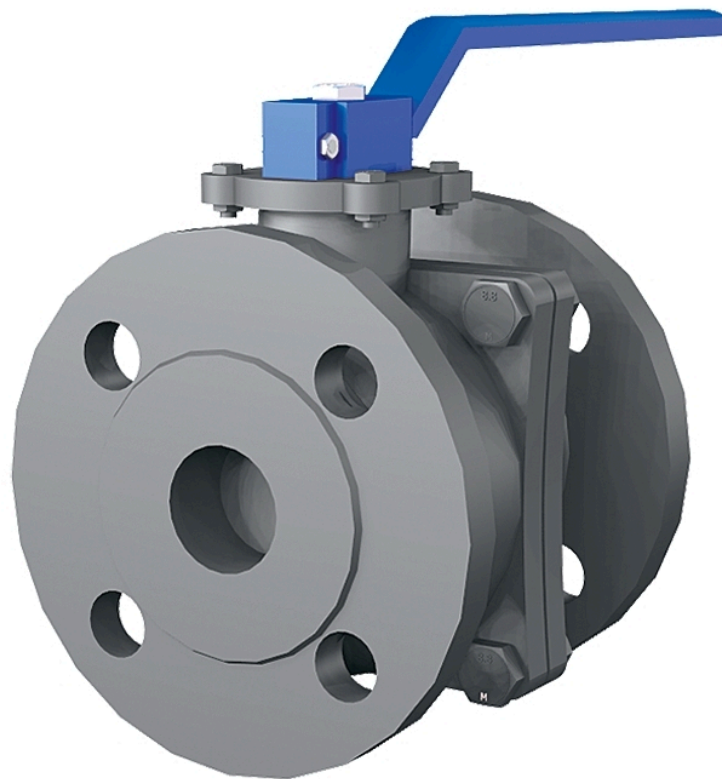


# Ball valve AT 3587-



## Product information

A gate valve made of grey iron with flanges and mounting flanges for actuators. Suitable for automation. Primarily for use with water, compressed air, and non-aggressive gases.

<b>Dimension range (DN)</b>	15 - 200
<b>PN</b>	16
<b>Temperature (°C)</b>	-10 - 180
<b>Main material</b>	Cast iron

### Area of use

Shut-off valve for the following media:

- Cold and hot water
- Non-aggressive gases
- Compressed air

### Tender text

#### PSB.1 Ball valves

Ball valve AT 3587, DN..., in a two-piece design with full bore, with a housing made of grey iron and seat rings made of PTFE. PN 16.

### Quality assurance

AFS 2023:5

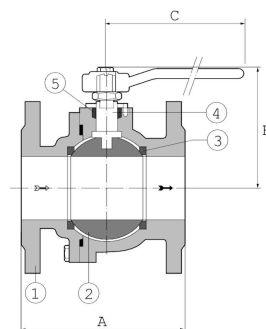
**The product is CE marked**

**Product marking:** Brand, DN, PN and material.

### Energy and environment declaration

**Reach date:** 4/15/2026 5:56:00 PM

**Pos**            **Component**            **Material**



## Measurements and weight

**Dimension range (DN):** 15 - 200

DN	A	B	C	D	Net weight (kg)
15	115	108	160	50	2.12
20	120	113	160	55	2.72
25	125	118	160	60	3.62
32	130	130	160	72	5.32
40	140	135	200	77	6.9
50	150	138	200	80	9
65	170	156	250	98	11.68
80	180	167	250	108.5	14.68
100	190	170	320	134	20.23
125	325	195	500	160	33.73
150	350	225	500	190	49.77
200	400	270	500	235	81.77

## Function and design

Two-piece ball valve with full bore. Mounting flange according to ISO 5211 for actuators.

## Technical data

**Main material:** Cast iron

**Main material code:** Cast iron GJL-200 (GG20)

**Included materials:** Cast iron, Stainless steel, Rubber, Other

**Included material code:** Stainless steel AISI 304 (1.4301), Cast iron GJL-200 (GG20), FPM/FKM (fluorine rubber), PTFE (polytetrafluoroethylene)

**Temperature (°C):** -10 - 180

**PN:** 16

**Connection:** Flanged EN1092

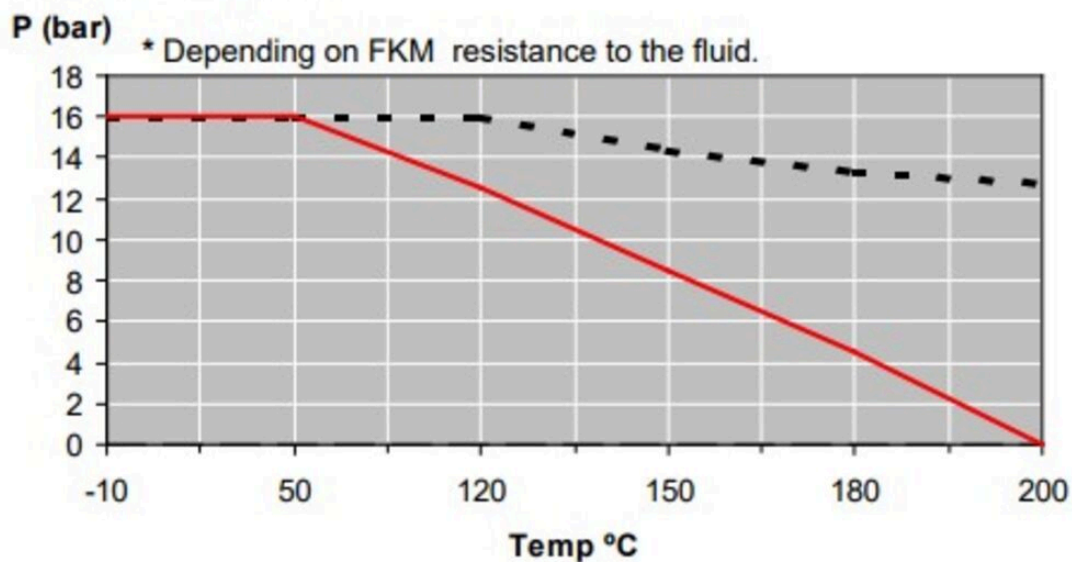
**ETIM classification:** EC011343 - Ball valve

**BK04 code:** 20702 Ball valves

**Comment to colour:** Gray

**ProductColourAndColourNote:** . Gray

### Pressure-Temperature



Item number	KVS	Required torque (Nm)	Connection 1 - spec.	Connection 2 - spec.	Stem type	Connection according to ISO 5211
3587-15	37.4	6	PN16	PN16	Flat head	F04
3587-20	74.8	6	PN16	PN16	Flat head	F04
3587-25	105	11	PN16	PN16	Flat head	F04
3587-32	176	12	PN16	PN16	Flat head	F04
3587-40	223	26	PN16	PN16	Flat head	F04
3587-50	416	41	PN16	PN16	Flat head	F04

Item number	KVS	Required torque (Nm)	Connection 1 - spec.	Connection 2 - spec.	Stem type	Connection according to ISO 5211
3587-65	660	41	PN16	PN16	Flat head	F07
3587-80	1200	80	PN16	PN16	Flat head	F07
3587-100	1980	119	PN16	PN16	Flat head	F07
3587-125	3600	190	PN16	PN16	Flat head	F07
3587-150	5040	220	PN16	PN16	Flat head	F10
3587V150	5040	220	PN16	PN16	Flat head	F10
3587-200	10890	450	PN16	PN16	Flat head	F10
3587V200	10890	450	PN16	PN16	Flat head	F10

## Installation and maintenance

**Flowdirection:** Bi-directional

**Possible mounting position:** Vertical, Horizontal

AT 3587 DN 15-200, Flanges according to EN1092-PN 16. The valve should be operated regularly to avoid the accumulation of dirt that can lead to leakage.

The company's management system  
is certified by DNV  
ISO 9001 • ISO 14001

# Get into the flow

Get into the flow with Armatec.



**armatec**

info@armatec.se | +46 31 89 01 00 | www.armatec.se