



straub 
the right connection

STRAUB-REP-FLEX

The new repair coupling for the reliably repairing of broken pipes and the leakage of water or drinking water pipes caused by corrosion.

www.straub.ch

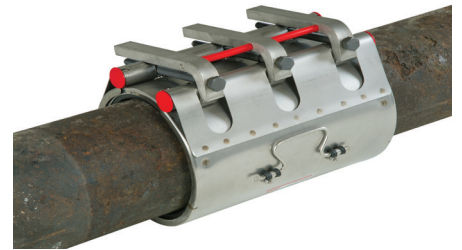
THE REPAIR COUPLING

STRAUB-REP-FLEX

The STRAUB-REP-FLEX is intended to be used for the reliably repairing of broken pipes and the leakage of water or drinking water pipes caused by corrosion. The proven STRAUB sealing lip system provides dependable and durable application on pipes of various materials such as steel, cast iron, ductile cast iron,

fibre cement, PVC or PE. It will also repair pipes of two different materials.

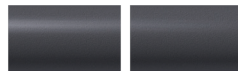
The EPDM sealing sleeve meets all SVGW, OVGW, WRC and NSF, as well as W270 and KTW according to DVGW.



Example for ordering:
STRAUB-REP-FLEX 46.0 mm, EPDM/SS
Overall length 200, ND 40, Ø 46 - 53mm



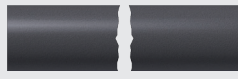
Damage caused by corrosion/damage



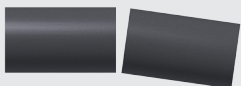
Pipe coupling ¹



Offset pipe breakages of up to 9mm ¹



Straight breakages



Angular deflection of up to 3°



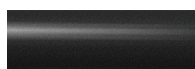
May also be installed with the pipe pressurised

¹ Pipes can be of two different materials

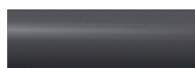
Applications for STRAUB-REP-FLEX repair couplings

TYPES OF PIPES FOR WHICH THE COUPLINGS MAY BE USED

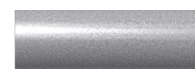
Ductile cast iron pipes



Cast iron pipes



Fibre-reinforced plastic pipes
PE/PVC/GFK



Concrete pipes



Cement asbestos pipes



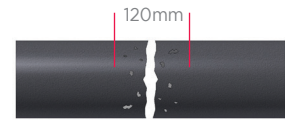
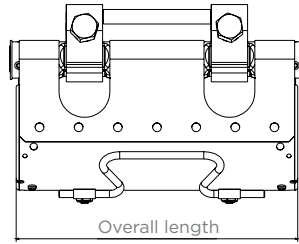
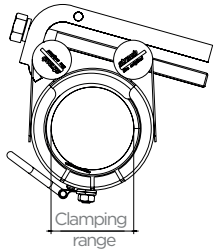
Steel- / Stainless steel pipes

STRAUB-REP-FLEX ND 40 - ND 150

200 / 300MM OVERALL LENGTH

Components	Materials
Jacket sheet	1.4301
Bolts	A2-70
Bars	1.4301

Sealing sleeve Temp.: -20°C up to +100°C
EPDM (SVGW, ÖVGW, WRC, NSF, W270, KTW) Medium: all qualities of water, waste water, air, solids and chemical products



Pipe corrosion width of up to 120mm, from ND 100 up to 200mm

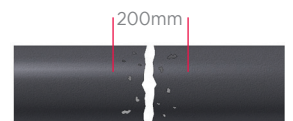
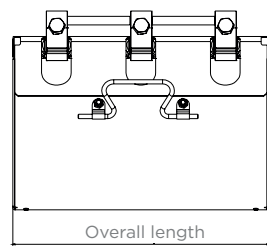
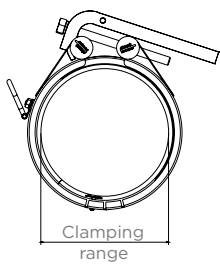
ND	Clamping range [mm]	Overall length [mm]	PN [bar]	Cast iron [mm]	Old cast iron [mm]	Steel [mm]	PE [mm]	Torque rate [Nm]	Allen head [mm]	Thread M...
40	46 - 53	200	16	-	51 - 53	46.0 - 49.0	50	10	17	10
40	53 - 60	200	16	56	-	-	-	10	17	10
50	56 - 64	200	16	-	62 - 64	56.0 - 61.0	63	10	17	10
50 / 60	63 - 71	200	16	66	-	70.0 - 71.0	-	10	17	10
60 / 65	72 - 80	200	16	77	72 - 74	72.0 - 76.1	75	10	17	10
65 / 70	76 - 83	200	16	82	-	77.0 - 79.0	-	10	17	10
70	82 - 89	200	16	87	83 - 85	-	-	10	17	10
80	88 - 98	200	16	98	94 - 96	88.0 - 89.0	90	10	17	10
90	97 - 108	200	16	108	104 - 108	97.0 - 102.0	-	10	17	10
100	108 - 118	200 / 300	16	118	114 - 116	107.0 - 114.3	110/125	10	17	10
100	120 - 130	200 / 300	16	-	123 - 125	-	-	10	17	10
100 / 125	128 - 138	200 / 300	16	-	134 - 137	132.0 - 134.0	-	10	17	10
125	139 - 149	200 / 300	16	144	140 - 143	139.7	140	10	17	10
135 / 150	150 - 160	200 / 300	16	-	150 - 153	157.0 - 160.0	160	10	17	10

STRAUB-REP-FLEX ND 150 - ND 400

300MM OVERALL LENGTH

Components	Materials
Jacket sheet	1.4301
Bolts	A2-70
Bars	1.4301

Sealing sleeve Temp.: -20°C up to +100°C
EPDM (SVGW, ÖVGW, WRC, NSF, W270, KTW) Medium: all qualities of water, waste water, air, solids and chemical products



Pipe corrosion width of up to 200mm

ND	Clamping range [mm]	Overall length [mm]	PN [bar]	Cast iron [mm]	Old cast iron [mm]	Steel [mm]	PE [mm]	Torque rate [Nm]	Allen head [mm]	Thread M...
150	159 - 170	300	16	170	166 - 169	168.3	160	20	19	12
165	175 - 185	300	16	-	180 - 184	-	-	20	19	12
175	186 - 196	300	16	196	191 - 194	183.0 - 191.0	-	20	19	12
175 / 180	196 - 206	300	16	-	198 - 200	-	200	20	19	12
190 / 200	206 - 216	300	16	-	208 - 211	211.0 - 216.0	-	20	19	12
200	216 - 226	300	16	222	218 - 222	219.1	225	20	19	12
225	241 - 251	300	16	248	244 - 247	241.0	250	20	19	12
250	264 - 274	300	16	274	268 - 273	264.0 - 273.0	-	20	19	12
250	274 - 284	300	16	-	-	-	280	20	19	12
300	315 - 325	300	10	324	322 - 325	316.0 - 323.9	315	20	19	12
350	355 - 365	300	10	-	-	355.6	355	20	19	12
350	368 - 379	300	10	378	376 - 379	368.0	-	20	19	12
400	398 - 408	300	10	-	-	406.4	400	20	19	12
400	419 - 429	300	10	429	426 - 430	419.0	-	20	19	12

- **Ideal for repairing pipe breakages and damage of up to 200mm caused by corrosion or ground movement**
- **Dependable and durable application – thanks to the proven STRAUB progressive sealing system**
- **Wide clamping range covering multiple pipe nominal dimensions**
- **Simplest handling because of innovative locking solution**
- **EPDM sealing sleeve for drinking water and hot water applications up to 100°C**
- **Complete 1.4301 stainless steel repair clamp for high corrosion resistance**
- **Installation with standard tools without extensions**

Aliaxis
UTILITIES & INDUSTRY

STRAUB Werke AG
Straubstrasse 13 - 7324 Wangs - Switzerland
Tel +41 81 725 41 00 - Fax +41 81 725 41 01
straub@straub.ch

www.straub.ch

straub 
the right connection

