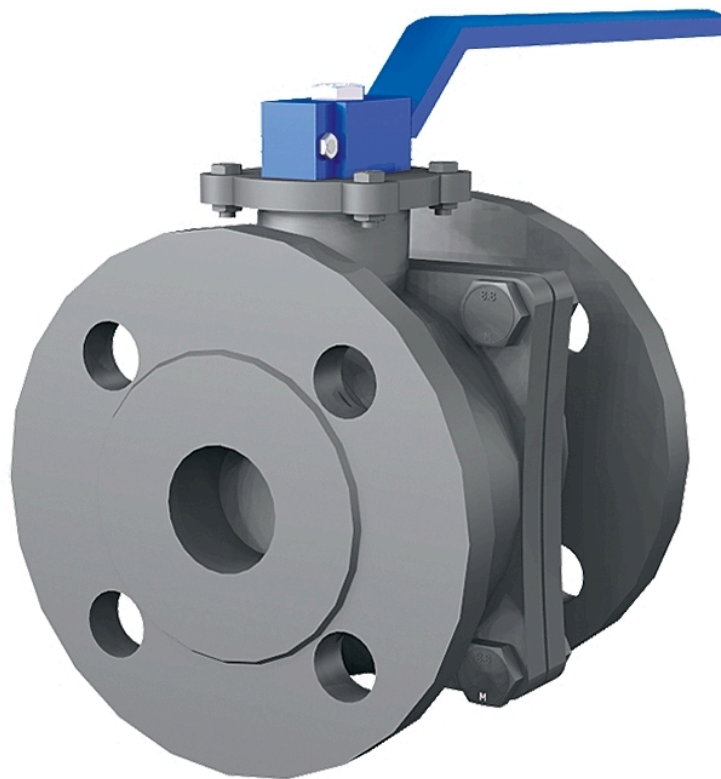


Ball valve AT 3587-



Product information

A gate valve made of grey iron with flanges and mounting flanges for actuators. Suitable for automation. Primarily for use with water, compressed air, and non-aggressive gases.



| | |
|-----------------------------|-----------|
| Dimension range (DN) | 15 - 200 |
| PN | 16 |
| Temperature (°C) | -10 - 180 |
| Main material | Cast iron |

Area of use

Shut-off valve for the following media:

- Cold and hot water
- Non-aggressive gases
- Compressed air

Tender text

PSB.1 Ball valves

Ball valve AT 3587, DN..., in a two-piece design with full bore, with a housing made of grey iron and seat rings made of PTFE. PN 16.

Quality assurance

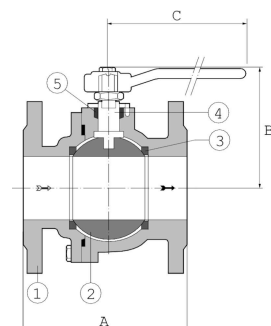
AFS 2023:5

Product marking: Brand, DN, PN and material.

Energy and environment declaration

SundaHus: C-

Pos **Component** **Material**



Measurements and weight

Dimension range (DN): 15 - 200

| DN | A | B | C | D | Net weight (kg) |
|-----|-----|-----|-----|-------|-----------------|
| 15 | 115 | 108 | 160 | 50 | 2.12 |
| 20 | 120 | 113 | 160 | 55 | 2.72 |
| 25 | 125 | 118 | 160 | 60 | 3.62 |
| 32 | 130 | 130 | 160 | 72 | 5.32 |
| 40 | 140 | 135 | 200 | 77 | 6.9 |
| 50 | 150 | 138 | 200 | 80 | 9 |
| 65 | 170 | 156 | 250 | 98 | 11.68 |
| 80 | 180 | 167 | 250 | 108.5 | 14.68 |
| 100 | 190 | 170 | 320 | 134 | 20.23 |
| 125 | 325 | 195 | 500 | 160 | 33.73 |
| 150 | 350 | 225 | 500 | 190 | 49.77 |
| 200 | 400 | 270 | 500 | 235 | 81.77 |

Function and design

Two-piece ball valve with full bore. Mounting flange according to ISO 5211 for actuators.

Technical data

Main material: Cast iron

Main material code: Cast iron GJL-200 (GG20)

Included materials: Cast iron, Stainless steel, Rubber, Other

Included material code: Stainless steel AISI 304 (1.4301), Cast iron GJL-200 (GG20), FPM/FKM (fluorine rubber), PTFE (polytetrafluoroethylene)

Temperature (°C): -10 - 180

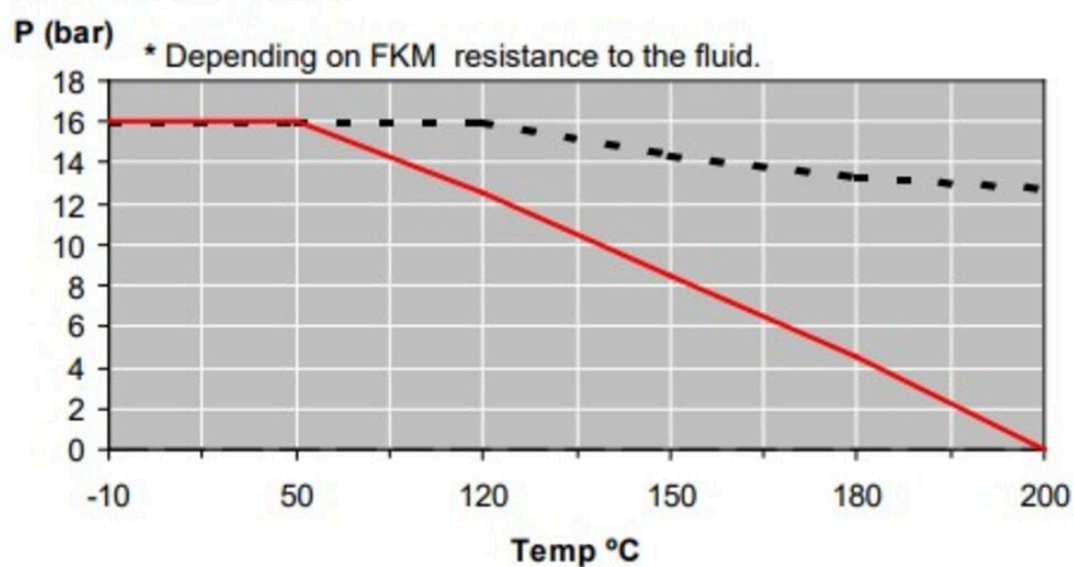
PN: 16

Connection: Flanged EN1092

ETIM classification: EC011343 - Ball valve

BK04 code: 20702 Ball valves

Pressure-Temperature



| Item number | KVS | Required torque (Nm) | Connection 1 - spec. | Connection 2 - spec. | Stem type | Connection according to ISO 5211 |
|-------------|------|----------------------|----------------------|----------------------|-----------|----------------------------------|
| 3587-15 | 37.4 | 6 | PN16 | PN16 | Flat head | F04 |
| 3587-20 | 74.8 | 6 | PN16 | PN16 | Flat head | F04 |
| 3587-25 | 105 | 11 | PN16 | PN16 | Flat head | F04 |
| 3587-32 | 176 | 12 | PN16 | PN16 | Flat head | F04 |
| 3587-40 | 223 | 26 | PN16 | PN16 | Flat head | F04 |
| 3587-50 | 416 | 41 | PN16 | PN16 | Flat head | F04 |

| Item number | KVS | Required torque (Nm) | Connection 1 - spec. | Connection 2 - spec. | Stem type | Connection according to ISO 5211 |
|-------------|-------|----------------------|----------------------|----------------------|-----------|----------------------------------|
| 3587-65 | 660 | 41 | PN16 | PN16 | Flat head | F07 |
| 3587-80 | 1200 | 80 | PN16 | PN16 | Flat head | F07 |
| 3587-100 | 1980 | 119 | PN16 | PN16 | Flat head | F07 |
| 3587-125 | 3600 | 190 | PN16 | PN16 | Flat head | F07 |
| 3587-150 | 5040 | 220 | PN16 | PN16 | Flat head | F10 |
| 3587V150 | 5040 | 220 | PN16 | PN16 | Flat head | F10 |
| 3587-200 | 10890 | 450 | PN16 | PN16 | Flat head | F10 |
| 3587V200 | 10890 | 450 | PN16 | PN16 | Flat head | F10 |

Installation and maintenance

Flowdirection: Bi-directional

Possible mounting position: Vertical, Horizontal

AT 3587 DN 15-200, Flanges according to EN1092-PN 16. The valve should be operated regularly to avoid the accumulation of dirt that can lead to leakage.

The company's management system
is certified by DNV
ISO 9001 • ISO 14001

Get into the flow

Get into the flow with Armatec.



armatec

info@armatec.se | +46 31 89 01 00 | www.armatec.se