

Ball Valve

Reduced or full bore

AT 3502, 3522, 3542, 3547,
3552, 3507, 3527

Dimension range	PN	Temperature range	Material
DN 8-250	10/100	-20 - 200 °C	Steel Acid proof stainless steel

Range of Application

Shut-off valve mainly for:

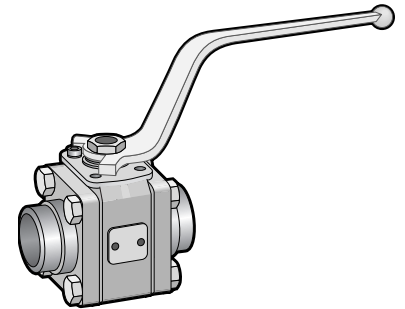
- Caustic solutions, acid and salt solutions
- Solvents and alcohols
- LPG, natural gas and petroleum products.
- Warm and cold water, compressed air.
- Saturated steam, see pressure-temperature table.

Quality Assurance

Tested according to SS-ISO 5208 leakage class 3 and applies to this valve type.

The valves are approved according to TA-luft, and fulfil the requirements in EGN94 for combustible gases, maximum 4 bar(e)

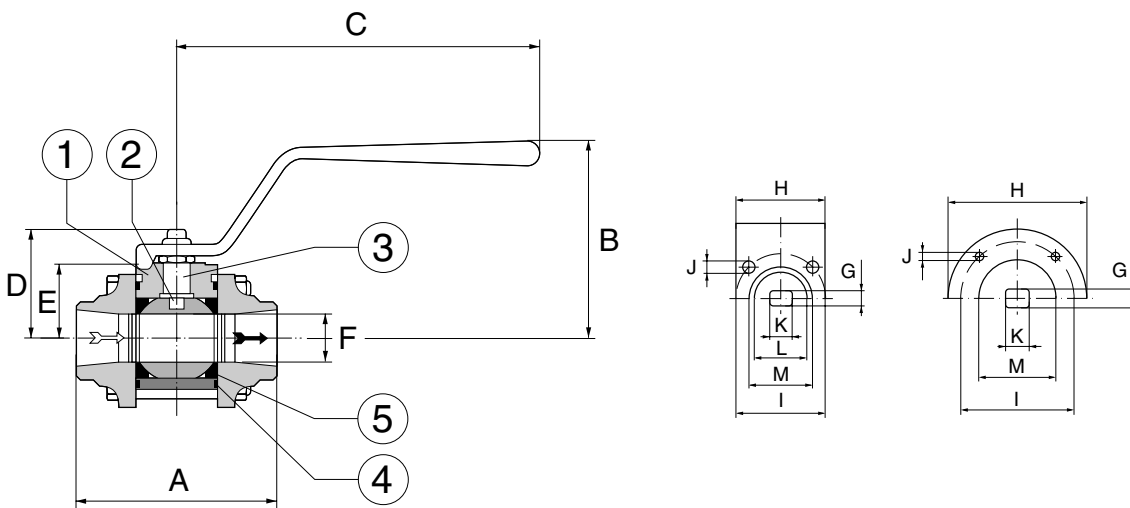
Certificate SS-EN 10204, type 2.2 and 3.1B, has to be specified when ordering.



AT 3502/3507

CE-marking

Fulfill PED 97/23/EC acc. to category III group 1 and 2.



Ball Valve

Reduced or full bore

AT 3502, 3522, 3542, 3547,
3552, 3507, 3527

Material specification

			AT3502/3507 AT3522/3527		AT3542 AT3547 AT3552	
1	Body	stainless steel	DN 8-32 (25)	X2CrNiMo18.10		
		stainless steel	DN 40-250 (200)	G-X6CrNiMo18.10		
		steell			DN 8-250	C22.8
2	Ball	stainless steel	DN 8-50 (40)	X2CrNiMo18.10	DN 8-25	X2CrNiMo18.10
		stainless steel	DN 65-250 (200)	G-X6CrNiMo18.10	DN32-250	X20Cr13
3	Stem	stainless steel		X2CrNiMo18.10	DN 8-65	X2CrNiMo18.10
		stainless steel			DN80-250	X20Cr13
4	Body gasket			PTFE		PTFE
5	Seat ring*			PTFE		PTFE
6	Stem seal			PTFE, glass-reinforced		PTFE, glass-reinforced
7	Stem packing			PTFE, carbon-filled and glass reinforced		PTFE, carbon-filled and glass-reinforced
8	Centering ring		DN 65-150 DN200-250	PTFE, glass-reinforced stainless steel	DN65-150 DN200-250	PTFE, glass reinforced steel
9	End piece	stainless steel	DN 8-150	X2CrNiMo18.10		
		stainless steel	DN200-250	G-X6CrNiMo18.10		
		steel			DN 8-250	C22.8
10	Lever			steel/epoxi coated		steel/epoxi coated

*Seat in high temperature performance, carbon-filled (25%) PTFE, additional designation HT. Seat rings in different material on request.
DN within parenthesis refers to full bore valves.

Dimension and weight, reduced bore AT 3502, 3522, 3542, 3547

DN	8	10	15	20	25	32	40	50	65	80	100	125	150	200	250
A	65	65	65	72,5	85,4	99,3	110,4	126,3	142,6	169,5	214	277	307	409	460
A1**	-	130	130	150	160	180	200	230	290	310	350	400	480	600	730
B	95	95	95	100	120	125	135	140	150	154	169	183	183	262	310
C	145	145	145	145	185	185	200	200	250	480	480	480	480	720	800
D	40	40	40	42	53	58	71	76	86	153	168	182	182	258	305
E	30	30	30	32	38	36	42	46	70	99	114	128	128	186	232
F	11,1	11,1	11,1	14,2	20,6	25,4	31,7	38	50	62	82,4	100	100	150	200
G	5,4	5,4	5,4	5,4	7,5	7,5	8,9	8,9	8,9	19	19	19	19	28,5	30
H	36	36	36	36	42	41,5*	48,5*	54	70	90	125	125	125	150	175
I	36	36	36	36	42	42	50	50	70	70	102	102	102	125	140
J	M5	M5	M5	M5	M5	M5	M6	M6	M8	M8	M10	M10	M10	M12	M16
K	9,5	9,5	9,5	9,5	11	11	14,3	14,3	14,3	22,5	22,5	22,5	22,5	35	38
L	22	22	22	22	25	25	30	30	45	-	-	-	-	-	-
M	25	25	25	25	30	30	35	35	55	55	70	70	70	85	100
ISO flange	F03	F03	F03	F03	F04	F04	F05	F05	F07	F07	F10	F10	F10	F12	F14
Weight	0,5	0,5	0,5	0,8	1,3	1,8	2,8	3,8	7	12	21	35	40	85	150
Weight AT3552		2,0	2,2	3,1	3,9	6,1	7,4	10,0	16,0	26,0	34,0	47,0	56,0	134,0	200,0

*Body length

** A1, face to face AT3552

Measurements in mm. weight in kg

Rätten till ändringar utan föregående meddelande förbehålls.
Armatec ansvarar inte för eventuella tryckfel eller missförstånd.
Dokumentet får kopieras endast i sin helhet.

Ball Valve

Reduced or full bore

AT 3502, 3522, 3542, 3547,
3552, 3507, 3527

Dimension and weight, full bore AT 3507, 3527

DN	15	20	25	32	40	50	65	80	100	125	150
A	72,5	85,4	99,3	110,4	126,3	142,6	169,5	214	277	307	409
B	100	120	125	135	140	150	154	169	183	183	262
C	145	185	185	200	200	250	480	480	480	480	720
D	42	53	58	71	76	86	153	168	182	182	258
E	32	38	36	42	46	70	99	114	128	128	186
F	14,2	20,6	25,4	31,7	38	50	62	82,4	100	100	150
G	5,4	7,5	7,5	8,9	8,9	8,9	19	19	19	19	28,5
H	36	42	41,5*	48,5*	54	70	90	125	125	125	150
I	36	42	42	50	50	70	70	102	105	102	125
J	M5	M5	M5	M6	M6	M8	M8	M10	M10	M10	M12
K	9,5	11	11	14,3	14,3	14,3	22,5	22,5	22,5	22,5	35
L	22	25	25	30	30	45	-	-	-	-	-
M	25	30	30	35	35	55	55	70	70	70	85
ISO flange	F03	F04	F04	F05	F05	F07	F07	F10	F10	F10	F12
Weight	0,8	1,3	1,8	2,8	3,8	7,0	12,0	21,0	35,0	40,0	85,0

Measurements in mm, weight in kg.

Function and Design

3-piece ball valve in antistatic design for simple service and maintenance.

No disassembling or changing of gaskets is necessary when the valve is welded in.

Homogenous and floating ball for tight shut-off and low pressure drop.

Self-compensating stem packing gives a tight valve also with high operation frequency.

The design with blow-out safe stem prevents the stem to blow out at pressure hammer.

Mounting flange according to ISO 5211 for actuators.

No dismantling of valve at service and maintenance.

Valves from DN65 have round body and end piece.

Technical Information

Pressure and temperature, reduced bore AT 3502, 3522, 3542, 3547

DN	8-32	40-50	65-100	125-200
Max. working pressure bar(e)*	100	70	50	40
Max. temperature °C*	Standard	200	200	200
	High temperature (HT)	250	250	250

Pressure and temperature acc. to applied standards.

*See also pressure and temperature graph.

Pressure and temperature full bore

Pressure and temperature, full bore 3507, 3527

DN	15-25	32-40	50-80	100-200
Max. working pressure bar(e)*	100	70	50	40
Max. working temperature °C*	Standard	200	200	200
	High temperature (HT)	250	250	250

Pressure and temperature acc. to applied standards.

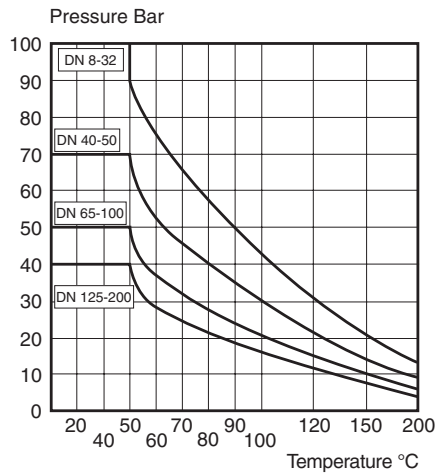
*See also pressure and temperature graph.

Ball Valve

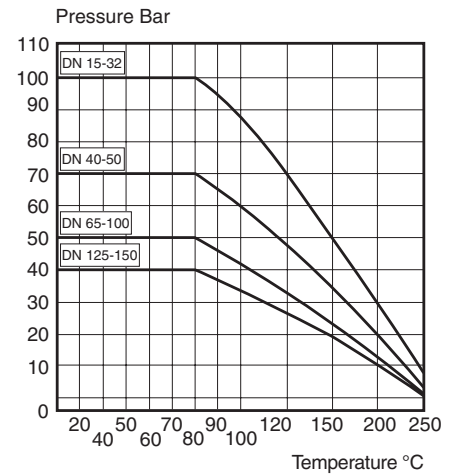
Reduced or full bore

AT 3502, 3522, 3542, 3547,
3552, 3507, 3527

Standard performance



High temperature performance



Note, the graph above are valid for valves with reduced bore. If valves with full bore are requested please chose the graph for one DN larger, i.e. full bore DN25, read the curve acc. to. DN32.

Torque

Torque, reduced and full bore

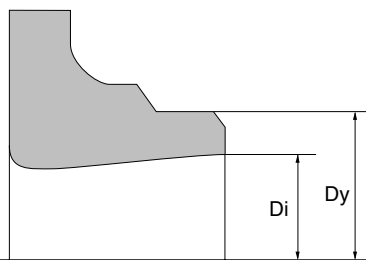
DN	8	10	15	20/ 15	25/ 20	32/ 25	40/ 32	50/ 40	65/ 50	80/ 65	100/ 80	125/ 100	150/ 125	200/ 150	250/ 200
Nm	4	4	4	5	9	15	20	25	50	80	130	180	180	270	350

For valves with Cryo seats please add 50% to the torque above.

For cavity filled valves please add 20% to the torque above.

Kv-value reduced and full bore

DN	8	10	15	20/ 15	25/ 30	32/ 25	40/ 32	50/ 40	65/ 50	80/ 65	100/ 80	125/ 100	150/ 125	200/ 150	250/ 200
Kvs	8	8	8	13	30	48	80	120	250	470	700	1250	1250	1800	2800



AT 3502/3507 Measurements welded ends

DN	8	10	15	20	25	32	40	50	65	80	100	125	150	200	250
Dy	13,5	17,2	21,3	26,9	33,7	42,4	48,3	60,3	76,1	88,9	114,3	139,7	168,3	219,1	273
Di	9,5	12,6	16,2	20,6	26	32	40	50	65	80	100	125	150	200	260
Material thickness	2,0	2,3	2,55	3,15	3,85	5,2	4,15	5,15	5,55	4,45	7,15	7,35	9,15	9,55	6,5

Rätten till ändringar utan föregående meddelande förbehålls.
Armatec ansvarar inte för eventuella tryckfel eller missförstånd.
Dokumentet får kopieras endast i sin helhet.

Ball Valve

Reduced or full bore

AT 3502, 3522, 3542, 3547,
3552, 3507, 3527

3542 measurements welded ends

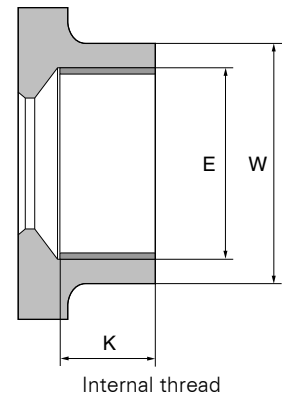
AT 3542 Measurements welded ends															
DN	8	10	15	20	25	2	40	50	65	80	100	125	150	200	250
Dy	13,5	17,2	21,3	26,9	33,7	42,4	48,3	60,3	76,1	88,9	114,3	139,7	168,3	219,1	273
Di	9,5	13,2	17,3	22,3	28,5	37,2	43,1	54,5	70,3	82,5	107,1	131,7	159,3	206,5	260
Material thickness	2	2	2	2,3	2,6	2,6	2,6	2,9	2,9	3,2	3,6	4	4,5	6,3	6,5

Measurements in mm.

Measurements internal threads

AT 3522, 3547, 3527 Measurements internal thread								
DN	8	10	15	20	25	32	40	50
G	1/4	3/8	1/2	3/4	1	1 1/4	1 1/2	2
E	13,1	16,67	20,95	26,44	33,25	41,91	47,8	59,61
K	13,5	13,5	16,5	17,5	20,5	20,5	24,5	25,5
W	21	21	27	33	41	51	56	68
No. of threads	19	19	14	14	11	11	11	11

Measurements in mm.
Valves with full bore (AT 3527) are only available for DN15-50.



Internal thread

Accessories and Options

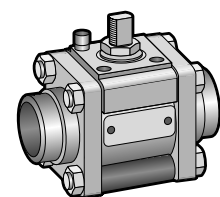
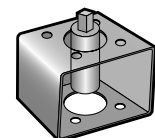
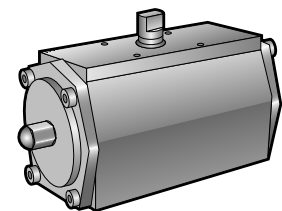
Can be provided with different types of actuators and limit switches, see separate datasheet.

The valve is available with different types of accessories and in different performance as:

Stem extension, Cavity filling, spring return handle with spring-to-open or spring-to-close function. Fire-safe design, 3-way valves, heating jacket, Cryo performance, double stuffing

box, tank bottom valve, high pressure performance. 3-piece valves give many variations for connection, for example one welded end and one threaded end.

NPT threads and customer related welded ends.



Installation

Valves with weld ends can be welded in without disassembling.

AT 3552 flanged, drilled according to:

DN	Form	DN	Form
10-50	SS 335-PN40	125-200	SS 335-PN16
65-100	SS 335-PN25	250	SS 335-PN10

Maintenance and Spare parts

The valve construction admit a simple exchanging of all parts.

Marking

Manufacturer, DN, PN and material.

Ball Valve

Reduced or full bore

AT 3502, 3522, 3542, 3547,
3552, 3507, 3527

How to order

Example: AT 3502HT25

AT 35	02	HT	25
Art.no.	Material/connection 02 = Stainless steel-welded ends-reduced bore 07 = Stainless steel-welded ends-full bore 22 = Stainless steel-internal thread-reduced bore 27 = Stainless steel-internal thread-full bore 42 = Steel-welded ends-reduced bore 47 = Steel-internal thread-reduced bore 52 = Steel-flanged-reduced bore	Design - = standard HT = high temperature FS = Firesafe	DN