

# Steam Trap

Float type, mechanical

AT 4490B

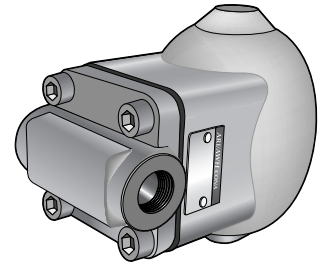
<b>Dimension range</b> 1/2"-1"	<b>PN</b> 16	<b>Temperature range</b> Max 300 °C	<b>Material</b> Steel
-----------------------------------	-----------------	--	--------------------------

## Range of Application

For draining of steam systems, distribution steam pipes and for industrial process facilities when condensate drainage at saturation temperature and no damping of condensate are required.

Example:

Separators  
Heat exchangers  
Water heaters  
Boiling vessels, especially for low steam pressure  
Autoclaves  
Oil heaters  
Steam pipes  
Low points



AT 4490B

## Quality Assurance

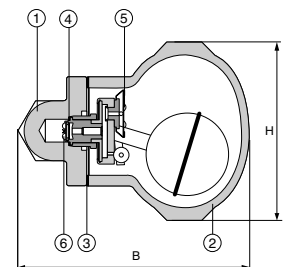
Certificate SS-EN 10204, type 2.2 and 3.1B, type of certificate has to be specified upon ordering.

## CE-marking

Fulfil PED 97/23/EC acc. to module H.

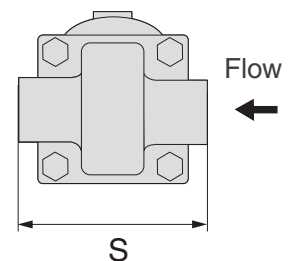
## Material Specification

1	Body	steel	C22.8, 1.0460
2	Cover	nodular iron	GGG 40.3, 0.7043
3	Body gasket		CrNi alloyed graphite
4	Sealing ring		R-Cu99
5	Capsule	stainless steel	X5CrNi18-10, 1.4301
6	Integrated back flow preventor	stainless steel	X5CrNi18-10, 1.4301



## Dimension and Weight

DN/Conn.	15	20	25
S	95	95	95
B	155	155	155
H	140	140	140
Weight	4,7	4,9	5,1



## Function and Design

Mechanical steam-trap working on the density difference between the liquids (condensate) and gas (steam).

The condensate is discharged at saturation temperature.  
The steam trap is suitable for varying pressure and capacity.  
Good air venting at starting up.  
Steam-tight because of water trap.  
Is available with alternative seats for optimization of capacities at each Dp.

## Technical Information

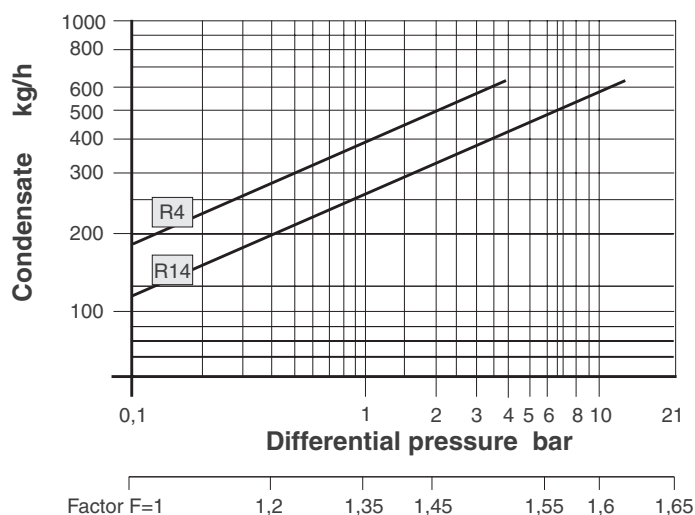
### Pressure and temperature

DN	Working pressure Max bar	Working temperature Max °C	1) Max Δp Bar
15-25	14	300	4, 14

1)Max Dp to be specified at order.

## Dimensioning

### Capacity DN15-25



The graph shows the capacities of hot condensate. The capacity of cold condensate is the sum of the chart value multiplied by the factor F, plus the capacity of the table cold condensate.

Please note that both discount factor F and the value of tabel cold condensate are dependent on the differential pressure.

### Cold condensate

Δp in bar	1	2	3	4	5
Flow at cold condensate ~ 20°C	280	360	440	490	550

## Accessories and Options

Flanged connection, see AT 4492B.

## Installation

Internal threads ½", ¾" and 1".

The trap shall always be mounted with the float branch in horizontal position.

## Marking

Manufacturer, DN, PN, material and flow arrow.

## How to order

Example: AT 4490B15-14		
AT 4490B	15	-14
Fig. no. AT 4490B	DN 15 20 25	Max Dp 4 alt. 14 bar*

\*to be specified at order