

Swing Check Valve

AT 1149

| | | | |
|------------------------------------|-----------------|--|------------------------------------|
| Dimension range 1/2 - 2" | PN 16 | Temperature range -30 - 180 °C | Material Stainless steel |
|------------------------------------|-----------------|--|------------------------------------|

Range of Application

Swing check valve mainly for:
Acids and saline solutions
Solvents and alcohols
Medium acc. to SSG 1650
Petroleum products

Quality Assurance

Testing acc. to SS-ISO 5208, leakage class 1 for this type of valve.
Certificate acc. to SS-EN 10204, type 2.2 och 3.1B, type of certificate has to be specified upon ordering.

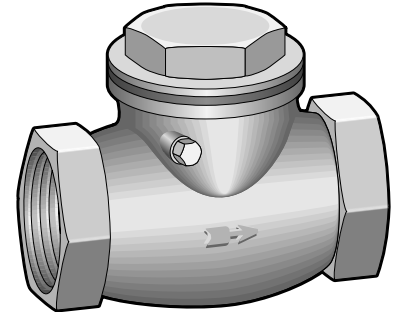
Material Specification

| | | | |
|---|------------|-----------------|------|
| 1 | Body | stainless steel | CF8M |
| 2 | Cover/plug | stainless steel | CF8M |
| 3 | Disc | stainless steel | CF8M |
| 4 | Gasket | PTFE | |

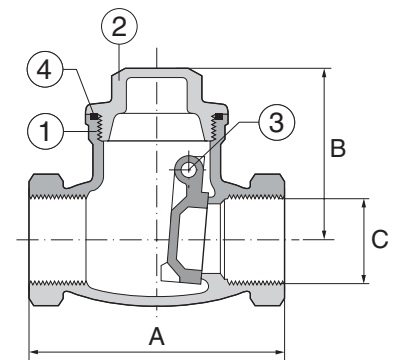
Dimension and Weight

| DN | 15 | 20 | 25 | 32 | 40 | 50 |
|--------|------|------|------|------|------|------|
| A | 65 | 80 | 90 | 105 | 120 | 140 |
| B | 44 | 53 | 58 | 62 | 73 | 78 |
| C | 15 | 20 | 25 | 32 | 40 | 50 |
| Weight | 0,26 | 0,48 | 0,67 | 1,00 | 1,56 | 2,24 |

Measurements in mm, weight in kg.



AT 1149



Function and Design

Internal threaded full bore check valve with tilting disc, metal to metal seated.

Technical Information

| Pressure and temperature | |
|--------------------------|----------------|
| Max.pressure | at temperature |
| 16 bar | 120 °C |
| 10 bar | 180 °C |

Installation

Internal threads according to DIN259.
To be installed in horizontal or vertical position with flow direction upwards.
Flow direction according to the flow arrow.

Marking

Manufacturer, DN, PN, material and flow arrow.

How to order

| Example: AT 1149-20 | | |
|---------------------|-----|--|
| AT 1149 | -20 | |
| Fig. no. | DN | |
| | 15 | |
| | 20 | |
| | 25 | |
| | 32 | |
| | 40 | |
| | 50 | |