

Globe check valve

AT 1140C

Dimension range DN 15-250	PN 40	Temperature range Max 400 °C	Material Steel
-------------------------------------	-----------------	--	--------------------------

Range of Application

Check valve mainly for:

Steam

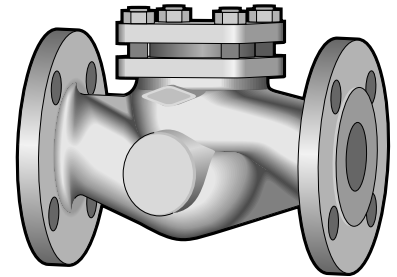
Condensate

Transfer oil

Heat water

Petroleum products

The valve is not suitable for flow at high pulsating rate.



AT 1140C

Quality Assurance

Testing is carried out acc. to SS-ISO 5208. Leakage class 1 applies to the valves. Certificate SS-EN 10204, 2.2 and 3.1B. and most off the classification authorities type of certificate has to be specified upon ordering.

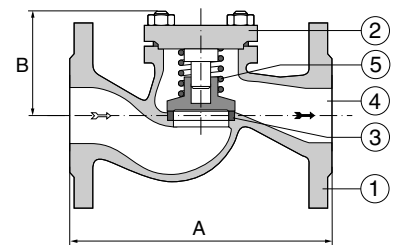
CE-marking

Fulfil PED 97/23/EC acc. to category III group 1 and 2.

Material Specification

1	Body	steel	GS-C25N
2	Cover	steel	GS-C25N
3	Seat	stainless steel*	X20Cr13
4	Globe	stainless steel*	X20Cr13
5	Spring	stainless steel	X12CrNi117
6	Bults/nuts	steel	CK 35
7	Cover gasket	graphite	

*At temperature $\geq 350^{\circ}\text{C}$ Stellite is recommended



Dimension and Weight

DN	15	20	25	32	40	50	65	80	100	125	150	200	250
A	130	150	160	180	200	230	290	310	350	400	480	600	730
B	70	80	85	100	110	115	130	145	165	185	205	250	300
Weight	3,8	4,9	5,9	7,1	10,4	12,3	22,7	28,5	40	64	90	170	240

Measurements in mm, weight in kg. Larger DN on request.

Function and Design

The check valve has a flow through in streamline design with spring loaded globe and works independently of the building in position.

Technical Information

Pressure drop

To calculate the pressure drop the following values are used.

DN	15	20	25	32	40	50	65	80	100	125	150	200	250
K_{vs}	3,9	6,8	11	18	27	43	71	111	173	265	377	667	1053

Pressure and Temperature

According to DIN 2401 with following maximum value.

Fig. no.	Working pressure max. bar	Working temperature max. °C
AT 1140C	40	400

Accessories and Options

Check valve made of cast iron, nodular iron and in angel performance is available on request.

Installation

Fig. no.	Flanges acc. to
AT 1140C	SS 335-PN 40

Marking

Manufacturer, DN, PN, material and flow arrow.

How to order

Example: AT 1140C50	
AT 1140C	50
Fig. no.	DN