

# Ball Valve

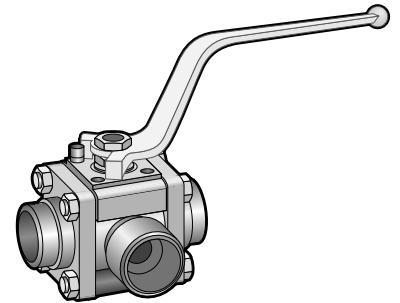
3-way

AT 3554, 3555

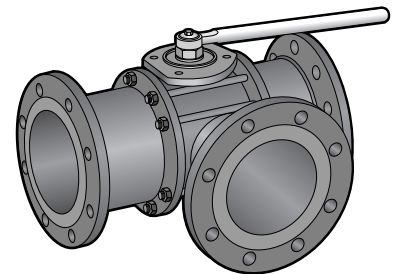
<b>Dimension range</b> DN 8-200	<b>PN</b> 10-100	<b>Temperature range</b> Max 200/250 °C	<b>Material</b> Stainless steel Steel
------------------------------------	---------------------	--	---

## Range of Application

3-way ball valve	
Stainless steel AT 3554	Steel AT 3555
<b>Mainly for:</b> Acid and saline solutions Solven and alcohols Petroleum products	<b>Mainly for:</b> Warm and cold water, compressed air Saturated steam max. 6bar Petroleum products



AT 3554



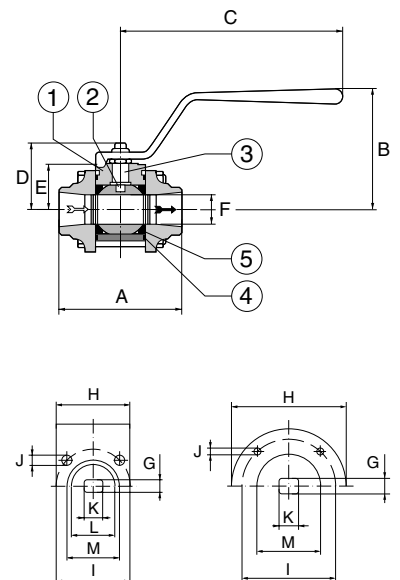
AT 3555

## Quality Assurance

Testing is carried out according to SS-ISO 5208 leakage class 3 and applies to the valve type.

## CE-marking

Fulfil PED 97/23/EC acc. to category III group 1 and 2.



# Ball Valve

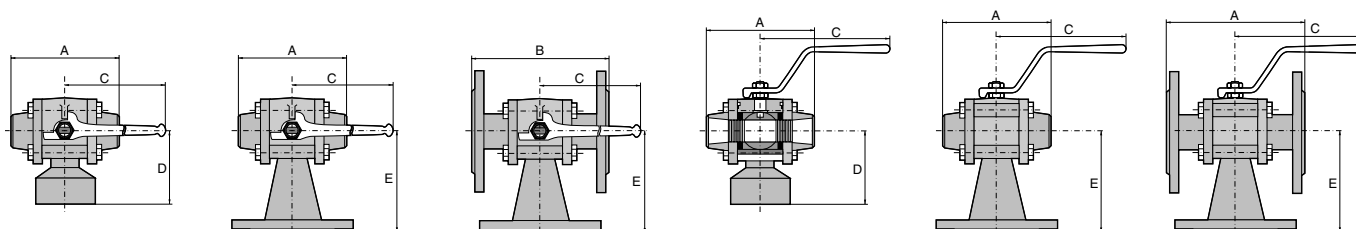
3-way

AT 3554, 3555

## Material Specification

		AT 3554			AT 3555		
1	Body	stainless steel	DN 8-32	X2CrNiMo18.10			
		stainless steel	DN 40-250	G-X6CrNiMo18.10			
2	Ball	steel			DN 8-250	C22.8	
		stainless steel	DN 8-50	X2CrNiMo18.10	DN 8-25	X2CrNiMo18.10	
3	Stem	stainless steel	DN 65-250	G-X6CrNiMo18.10	DN 32-250	X20Cr13	
		stainless steel		X2CrNiMo18.10	DN 8-65	X2CrNiMo18.10	
4	Body gasket			PTFE	DN 80-250	X20Cr13	
				PTFE		PTFE	
5	Seat ring*			PTFE		PTFE	
6	Stem seal			PTFE, glass fibre reinforced		PTFE, glass fibre reinforced	
7	Box packing			PTFE, carbon-filled and glass fibre reinforced		PTFE, carbon-filled and glass fibre reinforced	
8	Centering ring		DN 65-150	PTFE, glass fibre reinforced	DN 65-150	PTFE, glass fibre reinforced	
			DN 200-250	stainless steel	DN 200-250	steel	
9	End piece	stainless steel	DN 8-150	X2CrNiMo18.10			
		stainless steel	DN 200-250	G-X6CrNiMo18.10			
10	Lever	steel			DN 8-250	C22.8	
				steel/epoxi coated		steel/epoxi coated	

\* Seat ring in HT performs: carbon-filled and glass fibre reinforced PTFE



## Dimension and Weight

DN	10	15	20	25	32	40	50	65	80	100	125	150	200
A	64,4	64,4	72,5	85,4	99,3	110,4	126,3	143	170	214	277	307	409
B	130	130	150	160	180	200	230	290	310	350	400	480	600
C	125	125	125	160	160	200	200	250	480	480	480	480	720
D	50	50	60	60	75	80	90						
E	90	90	95	100	105	115	125	145	155	175	200	240	300

## Function and Design

3-piece ball valve in antistatic design for simple service and maintenance.

No disassembling or changing of the gaskets is necessary when the valve shall be welded in.

With homogenous floating ball for tight shut-off and low pressure drop.

Self-compensating stem packing gives a tight valve even at high operation frequency.

The design with blow-out safe stem prevents the stem to blow out at water hammer.

Mounting flange according to ISO 5211 for actuators.

No dismantling of valve at service and maintenance of actuator.

Rätten till ändringar utan föregående meddelande förbehålls.  
Armatec ansvarar inte för eventuella tryckfel eller missförstånd.  
Dokumentet får kopieras endast i sin helhet.

# Ball Valve

3-way

AT 3554, 3555

## Technical Information

### Pressure and temperature

DN	8-32	40-50	65-100	150-200
Working pressure max. bar*	100	70	50	40
Working temperature °C*	Standard	200	200	200
	High temperature (HT)	250	250	250

\*See pressure and temperature chart.

### Torque in non pressurized condition.

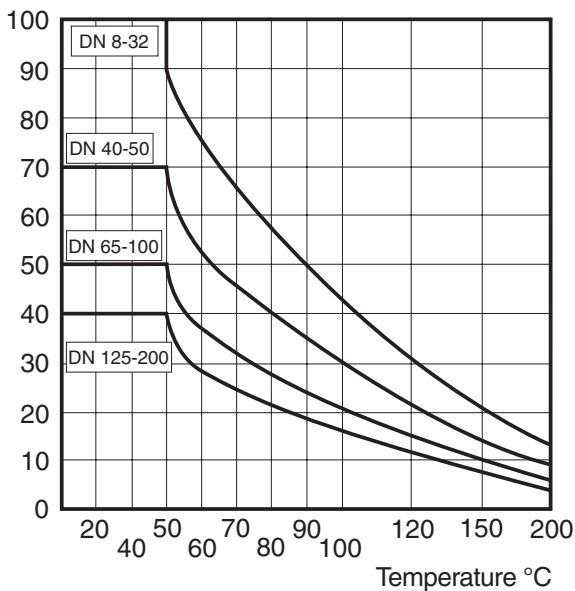
DN	8	10	15	20	25	32	40	50	65	80	100	125	150	200	250
Nm	4	4	4	5	9	15	20	25	50	80	130	180	180	270	350

### KV-value

DN	8	10	15	20	25	32	40	50	65	80	100	125	150	200	250
KVs	8	8	8	13	30	48	80	120	250	470	700	1000	1000	1800	2800

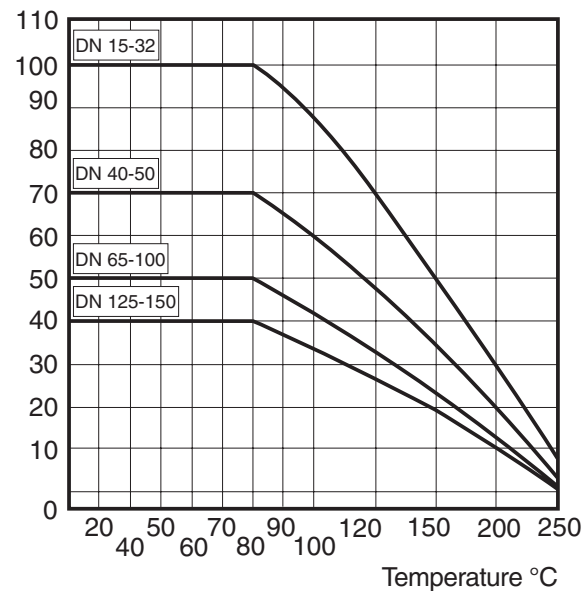
### Standard performance

Pressure Bar



### High temperature performance

Pressure Bar



### AT 3554 Measurements butt weld ends

DN	8	10	15	20	25	32	40	50	65	80	100	125	150	200	250
Dy	13,5	17,2	21,3	26,9	33,7	42,4	48,3	60,3	76,1	88,9	114,3	139,7	168,3	219,1	273
Di	9,5	12	15	20	25	34	40	50	65	80	100	125	150	200	260

### AT 3555 Measurements butt weld ends

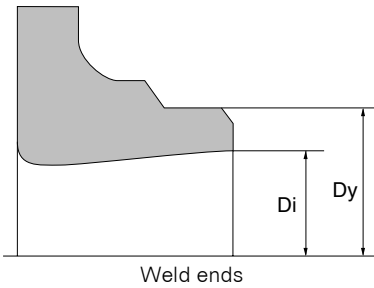
DN	8	10	15	20	25	2	40	50	65	80	100	125	150	200	250
Dy	13,5	17,2	21,3	26,9	33,7	42,4	48,3	60,3	76,1	88,9	114,3	139,7	168,3	219,1	273
Di	9,5	13,2	17,3	22,3	28,5	37,2	43,1	54,5	70,3	82,5	107,1	131,7	159,3	206,5	260

Measurements in mm

# Ball Valve

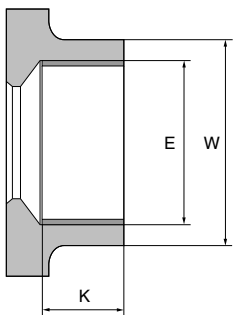
3-way

AT 3554, 3555



Measurements internal threads								
DN	8	10	15	20	25	32	40	50
G	1/4	3/8	1/2	3/4	1	1 1/4	1 1/2	2
E	13,1	16,67	20,95	26,44	33,25	41,91	47,8	59,61
K	13,5	13,5	16,5	17,5	20,5	20,5	24,5	25,5
W	21	21	27	33	41	51	56	68
No. of threads	19	19	14	14	11	11	11	11

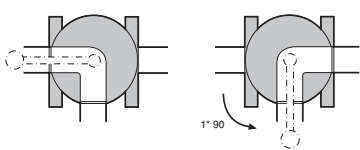
Measurements in mm.



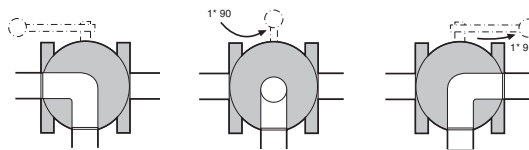
Internal threads

Flanges drilled acc. to:			
DN	Form	DN	Form
10-50	SS 335-PN40	125-200	SS 335-PN16
65-100	SS 335-PN25	250	SS 335-PN10

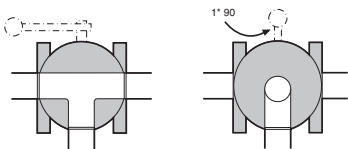
## L-bore horizontal



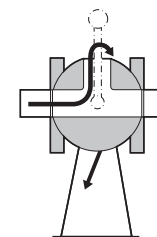
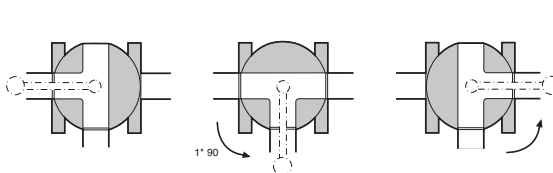
## L-bore vertical



## T-bore vertical



## T-bore horizontal



**NOTE!**  
At T-bore the center connection is not sealed

## Accessories and Options

Can be provided with different types of actuators and limit switches.

Stem extension.

Full bore. Double stuffing box.

Rätten till ändringar utan föregående meddelande förbehålls.  
Armatec ansvarar inte för eventuella tryckfel eller missförstånd.  
Dokumentet får kopieras endast i sin helhet.

# Ball Valve

3-way

AT 3554, 3555

## Installation

Valves with weld ends can be welded in without disassembling.

## Maintenance and Spare parts

The valve construction admit a simple exchanging of all parts.

## Marking

Manufacturer, DN, PN and material.

## How to order

Example: AT 3554-90LH444-15

AT 3554	-90LH	4	4	4	-15
<b>Fig. no.</b> 3554=Stainless steel 3555=Steel	<b>Typ</b> 90LH=L-bore horizontal, 90°operation 180TH=T-bore horizontal, 180° operation 180LV=L-bore vertical, 180° operation 90TV=T-bore vertical, 90° operation H=3rd connection horizontal V=3rd connection vertical	<b>Center connection*</b>  <b>* Type of connection</b> 1=Weld end 2=Internal thread 4=Flange connection	<b>Side connection right*</b>	<b>Side connection left*</b>	<b>D</b> <b>N</b>